

Code

Description

Size

### FLUIDMASTER 747- SIDE ENTRY INLET VALVE

- Fits most side inlet toilet cisterns (6-13 litre)
- New design provides a 40% quieter fill
- Unique quick release coupling nut, for easy access & maintenance
- Works well with high or low water pressure, fast refill
- Easy-to-access screen filter ensures years of trouble free operation
- Water level adjustment for the most efficient flush volume
- Anti-siphon/backflow design prevents contamination of fresh water supply
- Corrosion resistant plastic and stainless steel components
- Narrow profile allows a proper fit in slim line WC cisterns
- Absence of lever arm prevents storage tank wall distortion - making support structures unnecessary



	Shank Type	Shank Size
747UK	Plastic	1/2"
747UKL	DZR Brass	1/2"
747EL	DZR Brass	3/8"

### FLUIDMASTER 400- BOTTOM ENTRY INLET VALVE

- Simple to install without special tools
- Compact, efficient design fits today's 6-13 litre cisterns
- Works well with high or low water pressure - no need to change seals
- Fast refill, with an absolute shut-off after every flush
- Lasts longer by working with water pressure, not against it
- Seals are easy to access; simple to change or replace
- Durable materials stand up to millions of flushes
- Narrow profile allows a proper fit in slim line WC cisterns
- Water supply enters cistern from below water level - eliminating noise of cascading water

	Shank Type	Shank Size
400UK	Plastic	1/2"
400UKL	DZR Brass	1/2"
400EL	DZR Brass	3/8"



Code Description Size

## FLUIDMASTER PRO

### PRO 45 AND PRO 45B

- Ultra quiet, fast refill
- Reduces water hammer
- Height fully adjustable 230-355mm

PRO45 Plastic Shank  
 PRO45B Brass Shank



### PRO 75 AND PRO 75B

- Ultra quiet, fast refill
- Reduces water hammer

PRO75 Plastic Shank  
 PRO75B Brass Shank



## FLUIDMASTER DUAL FLUSH- CABLE VALVE

- Suits 18 – 25mm, 38mm or 48mm button holes
- Can make a single flush toilet into a dual flush
- Cable allows the buttons to be placed in any position (Top, side, front)
- Adjustable height overflow tube
- 50mm outlet pipe
- Long lasting silicone seal
- Easy full and half flush adjustment
- Suits most toilets

580AU02 Dual Flush Cable Valve



## FLUIDMASTER ACCESSORIES/SPARE PARTS

B242 Standard seal  
 B212S Low pressure seal  
 TA Top Cap assembly with adaptor  
 B7-984 Combo Washer for 747  
 B2-140 Shank Washer for 400UK  
 530B4 Dual Flush Outlet Valve  
 56-01 Fluidmaster Dual Flush Silicone Seal

56-03 Fluidmaster Dual Flush Pipe Collar  
 56-04 Dual Flush Tank to Bowl Gasket Foam  
 56-6100 Fluidmaster Dual Flush Tank to Bowl Gasket Rubber  
 B7-231 Fluidmaster Back Nut  
 B7-976 Washer to suit 747EL



**Code Description Size**

**FLUIDMASTER DUAL FLUSH- CISTERN VALVE**

- Suits most toilet cisterns with top centre buttons
- Adjustable rod lengths & adjustable height, 28mm overflow tube
- Half & full flush paddles
- Half and Full Flush adjustment
- Includes standard chrome 38mm dual flush buttons
- Silicon seal

560AU02 Dual Flush Cistern Valve Each



**DUAL FLUSH - OPTIONAL BUTTON TYPES**

560AU38	Round	38mm	Each
560AU72	Oval	72 x 38mm	Each
560AU48	Round	48mm	Each
560AU100	Oval	100 x 30mm	Each
560AU124	Oval White	124 x 30mm	Each



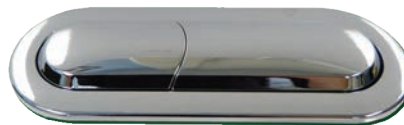
**38mm Round Button  
560AU38**



**72 x 38mm Button  
560AU72**



**48mm Round Button  
560AU48**



**100x 30mm Button  
560AU100**



**124 x 30mm Button  
560AU124**

Code	Description	Size
------	-------------	------

**FLUIDMASTER ACCESS PANEL**

- Conceals household plumbing, wiring cables.
- Easy to install, no framing required
- Works in walls and ceilings up to 20mm thick.
- Snaps in and out of position with no visible clamps or screws
- Can be painted or wallpapered



AP0808  
AP1414

Opening Size  
8" x 8"  
14" x 14"

**HARON ACCESS PANELS**

- Strong 16 gauge steel
- White primed or stainless steel finish.
- Rounded safety doors and frames eliminates weld

**STEEL WHITE PRIMED**

AP-6725  
AP-6731

8 x 8"  
14 x 14"

**STAINLESS STEEL**

AP-6735  
AP-6741

8 x 8"  
14 x 14"



Code Description Size

**FLUIDMASTER MONACO CISTERN WITH LINK & SEAT**

- Extra Easy Install Features Built-in
- 4.5/3L Dual Flush Technology with Simple Flush Volume Conversion to 6/3L or 9/4.5L
- UV Resistant – Certified
- Plastic Cistern with Bottom Inlet
- Chrome Button
- Includes Seat & Link
- Low, Mid & High Flush Pipe Installation Range
- Saves Water



1000A-002 4.5/3L Cistern with Link and seat

- FLUIDBUF Monaco Seat & Lid Buffers
- FLUIDKSEAL Monaco Flush Pipe Kee-Seal
- FLUIDLID Monaco Cistern Lid with 48mm FM Logo Button
- FLUIDLINK Monaco 195mm Link 7118E-014
- FLUIDPIPE Monaco Flush Pipe Kit w Kee-Seal, Wedge Flush Pipe Cone Seal and Locknut
- FLUIDSEAT Monaco Toilet Seat with Seat Bolt Kit
- FLUIDSEATB Monaco Spare Seat Bolts, Nuts and Brackets
- FLUIDPLUG Monaco P-022 Cistern Plug W/1/2" Washer & Locknut



**FLUIDMASTER PRO SERIES CISTERN WITH LINK & SEAT**

PRO Series cistern equipped with Fluidmaster valve technology and adjustable up to 9/4.5L flush volume

- Low Level Flush Pipe Included
- 4.5/3L Dual Flush Technology
- Simple Flush Volume Conversion to 6/3L or 9/4.5L
- UV Resistant – Certified
- Plastic Cistern with Bottom Inlet
- Saves water

1000A-004 4.5/3L Dual Flush Technology



Code	Description	Size
------	-------------	------

## FLO BY MOEN™ SMART WATER DETECTOR

Complete your Smart Water Security System with customisable Smart Water Detectors. Simply place the discreet 9cm Detectors in an attic, basement, laundry room, or anywhere that is potentially vulnerable to water damage by environmental factors or fixture malfunctions. If you also have the Flo Smart Water Shutoff, a leak sensed by the Detector can trigger the shut-off feature to protect the home from water damage.

- Monitors moisture, humidity, and room temperature.
- Customisable fixture monitoring & alarm
- Wi-Fi enabled device for smartphone connectivity
- Automatic water shutoff feature
- Operating Temperature Range -29 to 60 deg C

FLODTECT3	FLO Smart Water Detector 3 Pack	
-----------	---------------------------------	--



## FLO BY MOEN™ SMART HOME WATER MONITORING AND LEAK DETECTION SYSTEM

Monitors and protects your home from leaks and water damage with a single smart water valve, no additional sensors needed. Smart water valve detects issues such as high pressure, freezing water or a small leak. The system will alert you via the app, allowing you to shut the water off if required - no matter where you are.

- Smart home water monitoring and leak detection system
- Remote, automatic, and manual water on/off capability
- WiFi enabled device for smartphone connectivity
- Smartphone app available for iOS and Android
- Maximum operating pressure of 175 psi

FLO20	20mm FLO Smart Water Shut Off Valve	
-------	-------------------------------------	--





Code	Description	Size
<b>APARTMENT METERS</b>		
<b>SINGLE-JET DRY-DIAL METER FOR COLD AND HOT WATER</b>		

Two models available, one with a non-reactive scannable modulator disc (ETKD-M/ETWD-M). The AMK or AMW base models come standard-equipped with a magnet and offer the option of transferring counter data via pulser's.

Performance characteristics in overview

- Single-jet dry dial meter
- Model “-M” with 8-digit register and modulator disc (1 l/pulse) for M-Bus or pulse
- Model “AM” with 7-digit register offers the possibility of remote readout of the meter data via pulser (1 l/pulse)
- Register cap made of high-quality UV-resistant polymer plastic
- Optional: Hermetically sealed glass/copper register IP68 equipped with register cap as a standard
- Register rotatable 355°
- For horizontal and vertical installation (also for ascending and descending pipes)
- Approved in accordance with MID

Applications

- For the measuring cold potable water up to 30 °C (ETKD) or hot water up to 90 °C (ETWD)



### COLD APARTMENT METERS

WMZAPT15	15mm	Cold R80 1l/imp (173695 ETKD-N)
WMZAPT20	20mm	Cold R80 1l/imp (173620 ETKD-N)

### HOT APARTMENT METERS

WMZAPT15H	15mm	Hot R80 1l/imp (173694 ETWD-N)
WMZAPT20H	20mm	Hot R80 1l/imp (173684 ETWD-N)

### PULSE REED SWITCH

WMZMTK-MN		Reed Switch/Pulse for MTKD/APT R80 s (133802)
-----------	--	---

### CLIP ON PULSE/M-BUS OUTPUT MODULES FOR MTK AND APARTMENT METERS

WMZMTKCLP-N		EDC-C Pulse Mode U Clip On Reed Switch (140863)
WMZMTKCLP-MB		EDC-C MB Mode Clip On Reed Switch (140823)
WMZMTKCLP-PMB		EDC-C MB + Pulse Mode U Clip On Reed Switch (140869)

Code	Description	Size
<b>MTKD-N / MTKD-M</b>		
<b>MULTI-JET DRY DIAL WATER METER FOR COLD WATER</b>		

The MTKD-M is equipped with 8-digit-rollers and a modulator disc. MTKD-N with 7- or 8-digit rollers for different pulse values and can be retrofitted with pulser.

- Multi-jet dry dial meter
- For horizontal and vertical installation
- Register rotatable 355°
- Dry dial register with shielded magnetic coupling
- Measurement of Cold Potable water up to 50 °C
- Approved in accordance with MID



### COLD R80 MTK DZR COPPER CAN METERS (OLD CLASS B)

WMZR80CC15	15mm	CC R80 M/Disc UBA (168600 MTKD-M)
WMZR80CC20	20mm	CC R80 M/Disc UBA (168617 MTKD-M)
WMZR80CC25	25mm	CC R80 M/Disc UBA (168581 MTKD-M)
WMZR80CC32	32mm	CC R80 M/Disc UBA (168580 MTKD-M)
WMZR80CC40	40mm	CC R80 M/Disc UBA (168586 MTKD-M)
WMZR80CC50	50mm	CC R80 M/Disc UBA (168585 MTKD-M)

### COLD R160 MTK DZR COPPER CAN METERS (OLD CLASS C)

WMZR160CC20	20mm	CC R160 M/Disc UBA (169019 MTKD-M)
WMZR160CC25	25mm	CC R160 M/Disc UBA (169014 MTKD-M)
WMZR160CC32	32mm	CC R160 M/Disc UBA (169013 MTKD-M)
WMZR160CC40	40mm	CC R160 M/Disc UBA (169025 MTKD-M)
WMZR125CC50	50mm	CC R125 M/Disc UBA (169015 MTKD-M)
WMZMTKCOP-N	Reed Switch	EDC-S P Mode U copper can

### SCREW ON PULSE/M-BUS OUTPUT MODULES FOR COPPER CAN METERS

WMZMTKCOP-N	EDC-S Pulse Mode U Copper Can Reed Switch (140864)
WMZMTKCOP-MB	EDC-S MB Mode Copper Can Reed Switch (140824)
WMZMTKCOP-PMB	EDC-S MB+Pulse Mode U Copper Can Reed Switch (140870)

### COLD R80 MTK HERMETICALLY SEALED METERS (OLD CLASS B) INTERNAL USE ONLY

WMZ15	15mm	HS R80 10L/imp (151994 MTKD-N)
WMZ20	20mm	HS R80 10L/imp (154640 MTKD-N)
WMZ25	25mm	HS R80 10L/imp (151995 MTKD-N)
WMZ32	32mm	HS R80 10L/imp (151996 MTKD-N)
WMZ40	40mm	HS R80 10L/imp (151998 MTKD-N)
WMZ50	50mm	HS R80 10L/imp (151999 MTKD-N)
WMZMTK-MN	Reed Switch/Pulse	For MTKD-N-R80 W/Meters (133802)

### CLIP ON PULSE/M-BUS OUTPUT MODULES FOR MTK AND APARTMENT METERS

WMZMTKCLP-N	EDC-C Pulse Mode U Clip On Reed Switch (140863)
WMZMTKCLP-MB	EDC-C MB Mode Clip On Reed Switch (140823)
WMZMTKCLP-PMB	EDC-C MB + Pulse Mode U Clip On Reed Switch (140869)



Code	Description	Size
------	-------------	------

## MTWD-M AND MTWD-N MULTI-JET DRY DIAL WATER METER FOR HOT WATER

The MTWD is a multi-jet dry dial meter for hot water up to 90° C. The MTWD water meter is ideally suited for measuring at temperatures up to 90°C. By using special materials in the hot water version of the multi-jet dry dial meter, we can combine outstanding measurement readings with a high maximum temperature.

The MTWD is equipped with the ZENNER D-register:

MTWD-M with 8-digit-rollers register and modulator disc for non-reactive scanning M-bus or pulse.

### Performance characteristics

- Dry dial register with shielded magnetic coupling
- Maximum operating pressure PN16
- With flood-proof (IP68) hermetically sealed copper can register
- Approved in accordance with MID

### Applications

- For measuring hot water up to 90° C
- Water meter for horizontal and vertical installation

### Options

- MTWD-M equipped with communication interface for:
- Electronic pulse/M-Bus module



## COPPER CAN HOT WATER MTW METERS

WMZR80CC15H	15mm	Hot CC R80 M/Disc (168875 MTWD-M)
WMZR80CC20H	20mm	Hot CC R80 M/Disc (168874 MTWD-M)
WMZR80CC25H	25mm	Hot CC R80 M/Disc (168873 MTWD-M)
WMZR80CC32H	32mm	Hot CC R80 M/Disc (1168990 MTWD-M)
WMZR80CC40H	40mm	Hot CC R80 M/Disc (168996 MTWD-M)
WMZR80CC50H	50mm	Hot CC R80 M/Disc (169080 MTWD-M)

## SCREW ON PULSE/M-BUS OUTPUT MODULES FOR COPPER CAN METERS

WMZMTKCOP-N	EDC-S Pulse Mode U Copper Can Reed Switch (140864)
WMZMTKCOP-MB	EDC-S MB Mode Copper Can Reed Switch (140824)
WMZMTKCOP-PMB	EDC-S MB+Pulse Mode U Copper Can Reed Switch (140870)

## OLD STYLE REED SWITCHES

WMZMTK-N	For Class B MTK-N old s (118022)
WMZMNK-N	For Class C MNK-N Water Meters (111512)

Code Description Size

## RNK-RP-N

### VOLUMETRIC ROTARY-PISTON METER FOR COLD POTABLE WATER WITH PROTECTED DIAL AND BRASS BODY

RNK-RP volumetric piston meters with protected dial are used world wide, with its proven combination of highly precise measuring insert and rugged casing they perform perfectly the measurement of potable water. A very low starting flow and reliable performance are its main features.

The protected roller register is easily readable even under demanding climatic conditions.

The construction principle of the RNK-RP-N with direct transmission from the measuring chamber to the register ensures protection against magnetic or other manipulation attempts of interference.

The filter and integrated check valves ensure additional backflow prevention.

Performance characteristics in overview

- Counter with protected rollers
- Body made from high-quality brass
- Operating pressure PN16
- Display range 0.02 l to 9.999 m<sup>3</sup>
- Proven accuracy in any installation position
- With integrated tamper proof check valve
- Other versions and lengths of volumetric meters up to DN 40 available on request
- According to ISO 4064 and MID 2014/32/EU

Applications

- For the consumption measuring of cold potable water up to 50 °C



### VOLUMETRIC METERS DZR BRASS BODIED VOLUMETRIC

WMZVRP15	15mm	Cold UBA R160 0.5L/imp (122650 RNK-RP-N)
WMZVRP20	20mm	Cold UBA R160 0.5L/imp (122156 RNK-RP-N)

### STANDARD BRASS BODIED VOLUMETRIC

WMZVRP25	25mm	Cold R160 0.5L/imp (141063 RNK-RP-N)
WMZVRP32	32mm	Cold R160 0.5L/imp (141064 RNK-RP-N)
WMZVRP40	40mm	Cold R160 5L/imp (141065 RNK-RP-N)

### REED SWITCHES

WMZVRP-N	Reed Switch/Pulse for Volumetric Meters 15- (134908)
WMZVRPK-N	Reed Switch/Pulse for Volumetric Meters 25- (146172)

Code	Description	Size
<b>WPD / WPHD</b>		
<b>WOLTMAN METER WITH PARALLEL TURBINE SHAFT</b>		

The ZENNER Bulk water meter WPD / WPHD are constructed for the measurement of high flow rates with a constant flow rate profile. Due to the robust design, WPD / WPHD can cover a wide measuring range and provide accurate measuring results over a long period. It covers almost all measuring tasks in the drinking water distribution and supply network.

The housing of the WPD / WPHD is flow is optimized and the measuring insert is constructed as a replaceable unit. In combination with an updated bearing for the impeller, good long-term stability of the error curve can be achieved. The robust copper-glass-register is non-diffusive and protects against condensation. It also works reliably under the hardest conditions (e.g. in flooded pits or shafts).

#### Applications

- For the measuring of high flow rates
- For horizontal or vertical installation
- For cold water up to 50° C

#### Options

- Retrofittable with up to two reed-sensors
- Equipped with communication interface for:
- Electronic pulser
- Wired M-bus



## BULK COLD METERS

### WOLTMAN BULK COPPER CAN WATER METERS WITH MODULAR DISC AND PULSE CAPABILITY DO NOT COME WITH REED SWITCH

WMZWOLT50	50mm	Cold R100 Table D(156934 WPD)
WMZWOLT65	65mm	Cold R100 Table D (156935 WPD)
WMZWOLT80	80mm	Cold R100 Table D(156936 WPD)
WMZWOLT100	100mm	Cold R100 Table D (156937 WPD)
WMZWOLT125	125mm	Cold R100 Table D (156938 WPD)
WMZWOLT150	150mm	Cold R100 Table D (156939 WPD)
WMZWOLT200	200mm	Cold R100 Table D (156940 WPHD)
WMZWOLT250	250mm	Cold R100 Table D (156941 WPHD)
WMZWOLT300	300mm	Cold R100 Table D (156942 WPHD)
WMZWOLT400	400mm	Cold R80 Table D (158171 WPHD)
WMZWOLT500	500mm	Cold R80 Table D (167350 WPHD)
WMZWOLT-N		Reed Switch/Pulse for Woltman Meters (149529 WPD/WPHD)

### BULK METER PULSE/M-BUS OUTPUT MODULES (COLD WOLTMAN ONLY)

WMZWOLT-P10	EDC-C Pulse Mode U F. WOLT DN50-125 10L (152096)
WMZWOLT-P100	EDC-C Pulse Mode U F. WOLT DN150-300 100L (153267)
WMZWOLT-MB10	EDC-C MB Mode F. WOLT DN50-125 10L (152095)
WMZWOLT-MB100	EDC-C MB Mode F. WOLT DN150-300 100L (153260)

Code	Description	Size	
<b>IRRIGATION METERS WITH REED SWITCH ATTACHED (RSC)</b>			
WMZIRR50		50mm	Cold Irrigation Only RSC Table D (132576 WI)
WMZIRR65		65mm	Cold Irrigation Only RSC Table D (132577 WI)
WMZIRR80		80mm	Cold Irrigation Only RSC Table D (132578 WI)
WMZIRR100		100mm	Cold Irrigation Only RSC Table D (132579 WI)
WMZIRR125		125mm	Cold Irrigation Only RSC Table D (132580 WI)
WMZIRR150		150mm	Cold Irrigation Only RSC Table D (132581 WI)
WMZIRR200		200mm	Cold Irrigation Only RSC Table D (132582 WI)

### REED SWITCH FOR OLD STYLE BULK METERS

WMZWPB-N

For Woltman Meters WPH/WPH-WI

### WPH-N-CC 90° C WOLTMAN METER WITH PARALLEL TURBINE SHAFT FOR SANITARY HOT WATER UP TO 90° C

Woltman Parallel meters are always used when high flow rates with a relative constant flow profile are to be measured. With its robust construction they are capable of covering a large measuring range with stable accuracy.

The hydrodynamic optimized turbine is reliably operating at low flow rates and accurately measures flow rate peaks. Strong bearings with low friction loss guarantee a long life of the meter.

Performance characteristics in overview

- Low starting flow, high overload security
- Wide measuring range
- Removable measuring insert
- Low head loss
- Hydraulic bearing for long-term measuring stability
- Metal protective cover
- Flood-proof (IP68) hermetically sealed glass/copper register
- Dry dial counter with large number rollers simplifies readability
- For sanitary hot water up to 90° C
- For horizontal, vertical and inclined installation positions



### BULK HOT WATER METERS, COPPER CAN WITH REED SWITCH ATTACHED (RSC)

WMZWOLT50H	50mm	Hot Class B CC RSC Table D (169003 WPH-WI)
WMZWOLT65H	65mm	Hot Class B CC RSC Table D (169004 WPH-WI)
WMZWOLT80H	80mm	Hot Class B CC RSC Table D (169005 WPH-WI)
WMZWOLT100H	100mm	Hot Class B CC RSC Table D (169006 WPH-WI)
WMZWOLT150H	150mm	Hot Class B CC RSC Table D (169007 WPH-WI)
WMZWOLT200H	200mm	Hot Class B CC RSC Table D (169008 WPH-WI)

Code	Description	Size
<b>BUGATTI INLINE FILTER</b>		
	<ul style="list-style-type: none"> <li>15-50mm - Maximum pressure PN20</li> <li>65-100 - Maximum pressure PN16</li> <li>Stainless Steel Mesh</li> <li>Temperature range 0-110°C</li> <li>Mesh 400 microns - sizes 15-25mm</li> <li>Mesh 500 microns - size 32 - 50mm</li> <li>Mesh 600 microns - size 65-100mm</li> </ul>	
BIF15		15mm
BIF20		20mm
BIF25		25mm
BIF32		32mm
BIF40		40mm
BIF50		50mm
BIF65		65mm
BIF80		80mm
BIF100		100mm



### DOUBLE LIN Y STRAINER

- Brass Y Strainer
- Filter 304 Stainless Steel
- PN16
- Temperature -0° --+80°
- Thread ISO228

DI5005-15	15mm
DI5005-20	20mm
DI5005-25	25mm
DI5005-32	32mm
DI5005-40	40mm
DI5005-50	50mm
DI5005-65	65mm
DI5005-80	80mm



Code	Description	Size
<b>STAINLESS STEEL MESH FOR INLINE FILTER</b>		
304 Stainless Steel Mesh 600 micron		
BIFM15		15mm
BIFM20		20mm
BIFM25		25mm
BIFM32		32mm
BIFM40		40mm
BIFM50		50mm



<b>BRONZE STRAINER</b>		
BS15		15mm
BS20		20mm
BS25		25mm
BS32		32mm
BS40		40mm
BS50		50mm



<b>WATTS Y STRAINER DUCTILE IRON</b>		
<ul style="list-style-type: none"> <li>• Temperature Range 0 to + 80°</li> <li>• Nominal Pressure PN16 (1.6MPa)</li> <li>• Connection Dimension AS2129 Table E (Flange Standard)BS EN 558-1 (Structure length Standard)</li> <li>• Test Standard BS EN 12266-2003, GB/T13927-2008</li> <li>• Body Material: ASTM A-536 Ductile Iron 65-45-12, meet AS/NZS 2280:2004; Color: Blue,LP4703-G</li> </ul>		
YS50	50mm	
YS65	65mm	
YS80	80mm	
YS100	100mm	
YS100D	100mm Table D	
YS125	125mm	
YS150	150mm	
YS200	200mm	
YS250	250mm	
YS250D	250mm Table D	



<b>Y STRAINER MESH</b>		
YSM65		65mm
YSM80		80mm
YSM100		100mm
YSM150		150mm
YSM200		200mm
YSM250		250mm



<b>DRESSING SETS</b>		
<ul style="list-style-type: none"> <li>• 65mm, 80mm, 100mm includes 4 galv. nuts, bolts and washers and 1 gasket150mm includes 8 galv. nuts, bolts and washers and 1 gasket</li> <li>• For use with table D</li> </ul>		
DS65		65mm
DS80		80mm
DS100		100mm
DS150		150mm
DS200	Stainless steel bolts	200mm
DS80NG	No gasket	80mm
DS100NG	No gasket	100mm



Code	Description	Size
------	-------------	------

### IRRITEC FLUSHING BALL VALVE

FBV20		20mm
-------	--	------



### IRRITEC FILTER BODY ONLY

IFLC20		20mm
IFLC25		25mm

IFLE32		32mm
IFLE40		40mm

IFLG50	Stainless steel clamp Uses a disc instead of a filter	50mm
--------	--	------



### IRRITEC FILTERS COMPLETE WITH POLY MESH

- Polypropylene filter
- Maximum Working pressure 8 bar @20 degrees C

IF20WH	White	20mm
IF20LB	Light Blue	20mm
IF20RD	Red	20mm
IF20YW	Yellow	20mm
IF20BKP	Black Poly	20mm
IF20BK	Black S/Steel	20mm
IF20BKP	Black Poly	20mm
IF25WH	White	25mm
IF25LB	Light Blue	25mm
IF25RD	Red	25mm
IF25YW	Yellow	25mm
IF25BKP	Black	25mm
IF25BK	Black S/steel	25mm
IF32GY	Grey	32mm
IF32GN	Green	32mm
IF32DB	Dark	32mm
IF32WH	White	32mm
IF32LB	Light Blue	32mm
IF32RD	Red	32mm
IF32YW	Yellow	32mm
IF32BK	Black Poly	32mm
IF40GY	Grey	40mm
IF40GN	Green	40mm
IF40DB	Dark Blue	40mm
IF40WH	White	40mm
IF40LB	Light Blue	40mm
IF40RD	Red	40mm
IF40YW	Yellow	40mm
IF40BK	Black Poly	40mm
IF50RD	Red	50mm

Code	Description	Size	
<b>IRRITEC MESH SIZES</b>			
Colour	Micron	MM	Mesh
Grey	800	0.80	20
Green	500	0.50	30
Dark Blue	300	0.30	50
White	200	0.20	75
Light Blue	160	0.16	100
Red	130	0.13	120
Yellow	100	0.10	155
Black	80	0.08	200

**MESH ONLY - POLY**

IFM20/25LB	Light Blue	20/25mm
IFM20/25WH	White	20/25mm
IFM20/25RD	Red	20/25mm
IFM20/25YW	Yellow	20/25mm
IFM20/25BK	Black Poly	20/25mm
IFM20/25BKS	Black S/Steel	20/25mm
IFM32/40GN	Green	32/40mm
IFM32/40LB	Light Blue	32/40mm
IFM32/40DB	Dark Blue	32/40mm
IFM32/40WH	White	32/40mm
IFM32/40RD	Red	32/40mm
IFM32/40YW	Yellow	32/40mm
IFM32/40BK	Black	32/40mm
IFM32/40GY	Grey	32/40mm
IFM50RD	Disk Red	50mm (130 microns)

**HANDI PLUG**

HP15	Hand Tighten Test Plug -Male	15mm
HC15	Hand Tighten Test Cap -Female	15mm
HV15	Handiplug Valve	15mm



Code Description Size

## WATER HAMMER ARRESTERS

### **Definition of Water Hammer**

Noises and vibration which develop when column of non-compressible liquid is stopped abruptly

### **Common cause of Water Hammer**

The quick closure of electrical, pneumatic, spring loaded valves, or quick hand closure of taps etc ...

### **Water Hammer noise**

Shock created by quick closure can occur with or without an associated noise

### **System Protection**

Installation of a correctly sized Water Hammer Arrester Valve drastically reduces the damage throughout the water distribution system, as well as alleviating the banging and thumping noises

### **Problem Areas**

- Ceramic disc tapware and valves
- Spring loaded tapware and valves
- Hot water cylinders surge
- Long runs of pipe work
- High line pressures
- Non return valves
- Worn valves
- Pumps
- Solenoid valves

**NOT** recommended for Re-circulating Hot Water Systems.

Max. Working temp. 100°C

Max. Working pressure 350psi

Charge pressure 60 psi

## CU SERIES (COPPER)

- For use only with water

HA15AA	Mini	15mm
HA15A	Domestic	15mm
HA20B	Domestic Copper	20mm
HA25C	Copper Commercial	20mm

<b>CU Series</b>	<b>Diameter</b>	<b>Height</b>	<b>Thread Size</b>	<b>Fixture units</b>
HA15AA	22.22mm	145mm	15mm	1-4
HA15A	28.58mm	165mm	15mm	1-11
HA20B	34.92mm	205mm	20mm	12-32
HA25C	34.92mm	300mm	25mm	33-60

Code

Description

Size

## WATER HAMMER ARRESTER INSTALLATION INSTRUCTIONS

- The correct size valve must be installed for the application.
- Valve may be installed at any angle in a new or existing pipe system using a standard tee fitting
- The Arrester should be installed as close to the source of the pressure surge (water hammer) as possible
- Hot and cold water lines must be addressed separately
- For maximum efficiency install the valve in the direction directly facing the source

### SIZING INFORMATION

In order to select the correct size valve for a specific installation, it is necessary to consider four variables

These are:

#### FIXTURE UNITS: THE TOTAL NUMBER OF FIXTURE UNITS TO BE SERVED BY THE ARRESTER

To calculate the total fixture units use the table below

Note hot and cold lines are to be calculated separately

**LENGTH OF RUN:** As a general rule, for any branch line under 20 feet long the total number of fixture units will determine the PDI Size. For any branch lines over 20 feet long the total fixture units will determine the PDI size to be installed at no greater than 20 feet intervals. (i.e. If the total fixture units equal 15 it is necessary to install 2 "A" Arresters.

**SPEED OF VALVE CLOSURE:** When an extremely fast closing valve (E.g. Solenoid Valve) is the cause of the pressure surge the next largest PDI size valve should be installed

**SIZE AND SCOPE OF ADJOINING PIPES:** If a branch line is being sized and the installation is to be within ----- feet of a larger main pipe, the PDI Fixture Units must include all Fixture Units on the main adjoining line.

	TYPE OF SUPPLY CONTROL	Public			Private		
		Total	C.W	H.W	Total	C.W	H.W
Water Closet	Flush Valve	10	10	-	6	6	-
Water Closet	Flush Tank	5	5	-	3	3	-
Pedestal Urinal	Flush Valve	10	10	-	-	-	-
Stall or Wall Unit	Flush Valve	5	5	-	-	-	-
Stall or Wall Unit	Flush Tank	3	3	-	-	-	-
Lavatory	Faucet	2	1 1/2	1 1/2	1	1	1
Bathtub	Faucet	4	2	3	2	1 1/2	1 1/2
Shower Head	Mixing Valve	4	2	3	2	1	2
Bathroom Group	Flush Valve Closet	-	-	-	8	8	3
Bathroom Group	Flush Tank Closet	-	-	-	6	6	3
Separate Shower	Mixing Valve	-	-	-2	1	2	
Service Sink	Faucet	3	3	3	-	-	-
Laundry Tubs (3)	Faucet	-	-	-	3	3	3
Combination Fixture	Faucet	-	-	-	3	3	3

Code

Description

Size

## HAZARD RATING

## HIGH HAZARD

Any cross connection hazard which if connected to the potable water supply has the potential to cause death

## MEDIUM HAZARD

Any cross connection hazard which if connected to the potable water supply has the potential to injure or endanger health

## LOW HAZARD

Any cross connection hazard which if connected to the potable water supply has the potential to cause a nuisance but not injure or endanger health

Table 2: G12 - Dept Building &amp; Housing

NZ Building Code Acceptable Solution G12/AS1 Table 2: Selection of Backflow Protection. Available from the Ministry of Business, Innovation and Employment at <https://www.building.govt.nz/>

TYPE OF BACKFLOW PROTECTION	CROSS CONNECTION HAZARD					
	HIGH		MEDIUM		LOW	
	Back-Pressure	Back Siphonage	Back-Pressure	Back-Siphonage	Back-Pressure	Back-Siphonage
Air Gap (see NOTE 1)	✓	✓	✓	✓	✓	✓
Reduced pressure zone device	✓	✓	✓	✓	✓	✓
Double check valve assembly (see NOTE 2)			✓	✓	✓	✓
Pressure type vacuum breaker (see NOTE 3)		✓		✓		✓
Atmospheric vacuum breaker (see NOTE 4)		✓		✓		✓

## NOTE

1. Air gaps must not be installed in a toxic environment.
2. Double check valves can be installed in a medium and low hazard toxic environment.
3. Pressure type vacuum breakers are designed to vent at 7kPa or less. However, they require a significantly higher pressure to reseat and must be installed only in systems which provide pressures sufficient to ensure full closing of the valve.
4. Hose vacuum breakers are a specific type of atmospheric vacuum breaker.

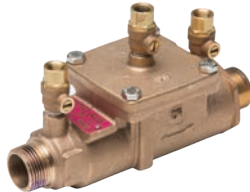
Code

Description

Size

**WATTS MODEL AND HAZARD RATING**
**MODEL 007**  
 DOUBLE CHECK VALVE

- 15mm-50mm
- Single Access Cover
- DZR Brass Body Construction
- Comply to AS2845.1, ASSE
- 0.5°C to 82°C


**MODEL 009**  
 REDUCED PRESSURE ZONE

- 15mm-50mm
- Single Access Cover
- DZR Brass Body Construction
- Comply to AS2845.1, ASSE
- 0.5°C to 82°C


**MODEL 007/709**  
 DOUBLE CHECK VALVE

- 65mm-250mm
- Cast iron construction
- Epoxy Coated
- Complies with AS2845.1, ASSE
- 0.5°C to 43°C constant
- 60°C Intermittent


**MODEL 009/909**  
 REDUCED PRESSURE ZONE DEVICE

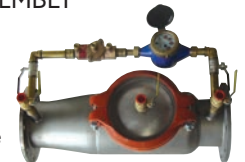
- 65mm-250mm
- Cast Iron Construction
- Epoxy Coated
- Complies with AS2845.1, ASSE
- 0.5°C to 43°C constant
- 60°C intermittent


**MODEL 2000SS**  
 DOUBLE CHECK VALVE

- 65mm-300mm
- Lowest Recorded Head Loss
- Stainless Steel Construction
- Lightweight
- Short End To End Dimensions
- Complies with AS2845.1, ASSE
- 0.5°C to 43°C


**MODEL 2000 SSF**  
 DOUBLE CHECK DETECTOR ASSEMBLY

- 65mm-300mm
- Stainless Steel Construction
- Lightweight
- Short End to End Dimensions
- Used on fire lines to detect water usage
- Complies with AS2845.1, ASSE
- 0.5°C to 43°C


**MODEL 909**  
 REDUCED PRESSURE ZONE DEVICE

- 20mm-50mm
- Bronze Body Construction
- Complies with AS2845.1, ASSE
- Suitable for Vertical or Horizontal Installation
- 0.5°C to 60°C continuous, 82°C intermittent
- 909HW 0.5°C to 99°C


**MODEL 4000SS**  
 REDUCED PRESSURE ZONE DEVICE

- 65mm-300mm
- Stainless Steel Construction
- Lightweight
- Short End to End Dimensions
- Complies with AS2845.1, ASSE
- 0.5°C to 43°C


**COLT 200 SERIES**  
 DOUBLE CHECK VALVE

- 65mm-300mm
- Closest Competitor is more than 360% Heavier
- Extremely Compact Design
- 300 Series Stainless Steel
- Complies with AS2845.1, ASSE
- 0.5°C to 60°C


**COLT 400 SERIES**  
 REDUCED PRESSURE ZONE DEVICE

- 65mm-300mm
- Closest Competitor is more than 200% Heavier
- Compact Design
- 300 Series Stainless Steel
- Complies with AS2845.1, ASSE
- 0.5°C to 60°C





Code	Description	Size
<b>SERIES 008 SPILL RESISTANT VACUUM BREAKER</b>		
High hazard		
008-15B		15mm
008-15BLH		15mm L/H
008-20B		20mm


**008 CHECK KITS**

0887972		15mm
0887974		20-25mm

**008 BONNET KITS**

0888012		15mm
0887973		20-25mm

**SERIES 800M PRESSURE VACUUM BREAKERS**

Temperature Range - 0.5°C to 60°C

Designed to prevent back syphonage of contaminated water into the potable water supply and are for high hazard cross-connections subject to continuous pressure. The valves must be installed 300mm above the highest downstream point of water.

800M4QT20		20mm
800M4QT25		25mm
800M4QT32		32mm
800M4QT40		40mm
800M4QT50		50mm


**ATMOSPHERIC VACUUM BREAKERS**

High hazard not subjected to continuous pressure - Non Testable

288A15		15mm
288A20		20mm
288A25		25mm
288A32		32mm
288A40		40mm



288AC15		15mm
288AC20		20mm
288AC25		25mm


**HOSE BIB VACUUM BREAKER**

Non continuous pressure- low hazard - Non testable

- DR Brass
- 0°C to 90°C
- Maximum pressure rating 1400Kpa

HB		20mm
----	--	------


**WATTS S8CF VACUUM BREAKER 15MM**

Maximum Pressure: 125psi (8.6 bar)

Maximum Temperature: 180°F (82°C)

S8C	Chrome	15mm
-----	--------	------



Code	Description	Size
------	-------------	------

**LAB FAUCET VACUUM BREAKER**

Series NLF9 Dual Check Vacuum Breakers for Laboratory Faucets are used for noncontinuous pressure, health hazard, applications and are backsiphonage backflow preventers. This series is specially made for laboratory faucets where portable hoses can be attached and prevent the flow of contaminated water back into the potable water supply. These vacuum breakers can be installed on new or existing faucets without plumbing changes.

Non Testable.

Temperature Range: 33°F – 180°F (0.5°C — 82°C)

Maximum Working Pressure: 150psi (10.3 bar)

NLF9-10	10mm
---------	------

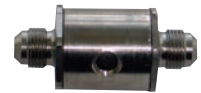


**VENDING MACHINE WATER SUPPLY LINES**

For Carbonated Beverage Machines that use carbon dioxide gas and carbonated water.

- Stainless steel body construction
- Internal rubber components
- Continuous or intermittent pressure applications.
- Maximum Working Pressure: 1380kPa

9BD10	10mm
-------	------



**SERIES 9D DUAL CHECK VALVE WITH ATMOSPHERIC VENT**

- Non testable
- Non-health hazard applications
- Brass body
- Stainless steel internal parts.
- Designed for continuous pressure
- Minimum Working Pressure: 172kPa
- Maximum Working Pressure: 1200kPa

0061916	15mm
0061920	20mm



**DUAL CHECK VALVE**

- Low Hazard
- Non-Testable device
- Bronze Body
- Consists of two independent checks
- Can be installed vertically or horizontal
- Temperature range: 0.5 °C to 82 °C
- Pressure range: 1000 kPa

WDCV10	7C Chrome #0061856	10mm
WDCV15	7 U2 - 2 #0061783	15mm
WDCV20	7 U2 - 2 #0061791	20mm
WDCV25	7 U2 - 2 #61991042	25mm

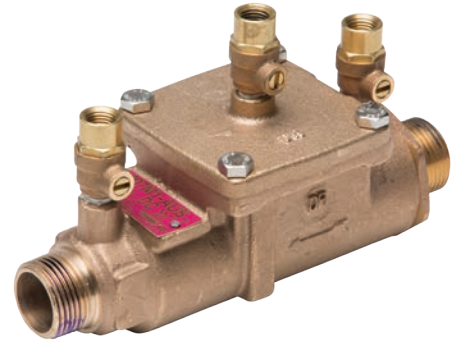


Code	Description	Size
<b>07F CAST IRON SINGLE CHECK LESS FITTINGS (DEVICE ONLY)</b>		
07F-100LF		100mm
07F-150LF		150mm
<b>SPARE PARTS 07F SINGLE CHECK</b>		
<b>07F RUBBER CHECK PARTS</b>		
0887105		100mm
0887106		150mm
0887107		200mm
<b>07F S 8" SEAT KIT</b>		
0887113		200mm
<b>07F TOTAL REPAIR KIT</b>		
0887114		100mm
<b>1000SS SINGLE CHECK VALVE</b>		
<b>1000SS STAINLESS STEEL SINGLE CHECK VALVE</b>		
1000SSLF80		80mm
1000SSLF150		150mm
1000SSLF200		200mm
1000SSLF250		250mm
<b>1000SS SPARE PARTS</b>		
<b>1000SS CAM CHECK ASSEMBLY</b>		
7015580		100mm
7016695		150mm
<b>1000SS CAM CHECK O RING</b>		
7013301		150mm
<b>1000SS AMES CLAPPER ASSEMBLY</b>		
7016899		100mm
7017479		150mm
<b>1000SS KNUCKLE JOINT ASSY</b>		
7015552		200mm
<b>1000SS PIVOT ARM PIN 2 C-CLIPS</b>		
7013853		100mm
7013841		150mm

Code	Description	Size
------	-------------	------

**WATTS 007/AMES 2000B DCV**

- Low/ Medium Hazard Installations
- Testable Device
- Suitable for back pressure & back syphonage installations
- Can be installed vertically or horizontally
- Can be installed below ground in a suitable enclosure
- Continuous and non continuous pressure installations
- Temperature: 0.5 °C to 82°C
- Pressure Range: 1200 kPa
- 15-50mm BSP threaded
- DZR Brass Construction


**WATTS 007 DCV LESS FITTINGS (DEVICE ONLY)**

007-15BLF	15mm
007-20BLF	20mm
007-25BLF	25mm
007-32BLF	32mm
007-40BLF	40mm
007-50BLF	50mm

**WATTS 007 DCV ASSEMBLY WITH 2 BALL VALVES AND AN INLINE STRAINER**

007-15B	15mm
007-20B	20mm
007-25B	25mm
007-32B	32mm
007-40B	40mm
007-50B	50mm

**WATTS 007 BRASS DCV C/W 2 BALL VALVES, 2 UNIONS & INLINE STRAINER**

007-15BU	15mm
007-20BU	20mm
007-25BU	25mm
007-32BU	32mm
007-40BU	40mm
007-50BU	50mm

**WATTS ASSEMBLED 007 DCV BOUNDARY TRAIN COMPLETE**

007-15BUB	15mm
007-20BUB	20mm
007-25BUB	25mm
007-32BUB	32mm
007-40BUB	40mm
007-50BUB	50mm

Code	Description	Size
------	-------------	------

**WATTS 007 CAST IRON DCV**

- Fused Epoxy Coated cast Iron Body
- Temperature Range: 0.5°C to 43°C
- 60°C Intermittent
- Pressure Range: 1200 kPa
- Top Entry Service
- Internal Relief valve for reduced installation clearances
- Protects against Back-pressure and Back-syphonage

**WATTS 007 CAST IRON DCV LESS FITTINGS (DEVICE ONLY)**

007-65CLF		65mm
007-80CLF		80mm

**WATTS 007 CAST IRON DCV ASSEMBLY WITH BUTTERFLY VALVES AND Y STRAINER**

007-65C		65mm
007-80C		80mm

**SPARE PARTS WATTS 007****007 1ST OR 2ND CHECK COMPLETE 1 ONLY**

0887193	007 AUS	15mm
0887026	007 M1	20-25mm

**007 1ST CHECK COMPLETE**

0887045	007 M2	20mm
0888550	007 M3	20mm
0887023	007 AUS 2	0-25mm
0887025	007 AUS	40-50mm
0887186	007 M1	40-50mm
0887719	007 M2	32-40mm
0887285	007	65-80mm

**007 2ND CHECK COMPLETE**

0887046	007 M2 20mm	
0888551	007 M3 20mm	
0887024	007 AUS 20-25mm	
0887028	007 AUS 40-50mm	
0887187	007 M1 40-50mm	
0887720	007 M2 32-40mm	
0887286	007 65-80mm	

**007 COMPLETE RUBBER PARTS**

0887194	007 AUS	15mm
0887043	007 M2	20mm
0888552	007 M3	20mm
0887040	007 AUS	20-25mm
0887042	007 M1	20-25mm
0887041	007 AUS	40-50mm
0887188	007 M1	40-50mm
0887721	007 M2	32-40mm
0887287	007	65-80mm

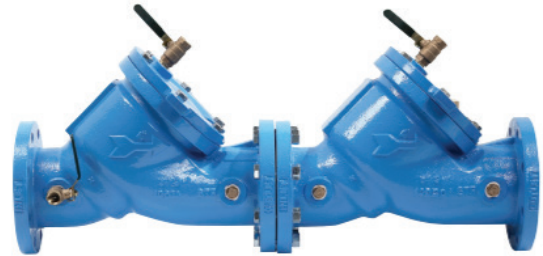
Code	Description	Size
<b>007 SEAT KITS</b>		
0887289	007 AUS 1st check seat only 65-80mm	
0887290	007 AUS 2nd check seat only 65-80mm	
<b>007 UNIVERSAL SPARES: CONTAINS ALL COMPLETE RUBBER PARTS KITS FOR SIZE OF VALVE:</b>		
0887800	007	20mm
0887801	007	25mm
0887802	007	40mm
0887803	007	50mm
<b>007 RETAINERS</b>		
1047053	007 AUS	15mm
1047382	007 M1	20-25mm
1047394	007 M2/M3	20mm
1047001	007 AUS	40-50mm
1047112	007 M1	40-50mm
1047099	007 M2	32-40mm
<b>007 TEST COCKS</b>		
0006630	007	15-25mm
0006635	007	32-50mm
<b>AMES 2000B SPARE PARTS</b>		
<b>2000B 1ST CHECK COMPLETE</b>		
7016330	2000B	15mm
7016331	2000B M2	20mm
7016332	2000B M3	20mm
7016333	2000B M2	25mm
7016334	2000B M2	32-40mm
7016335	2000B M2	50mm
<b>2000B 2ND CHECK COMPLETE</b>		
7016330	2000B	15mm
7016337	2000B M2	20mm
7016338	2000B M3	20mm
7016333	2000B M2	25mm
7016340	2000B M2	32-40mm
7016341	2000B M2	50mm
<b>2000B COMPLETE RUBBER PARTS</b>		
7016348	2000B	15mm
7016349	2000B M2	20mm
7016350	2000B M3	20mm
7016351	2000B M2	25mm
7016352	2000B M2	32-40mm
7016353	2000B M2	50mm
<b>2000B TEST COCKS</b>		
7017250	2000B	15-25mm
7017251	2000B	32-50mm WATTS 709 (DCV)



Code	Description	Size
------	-------------	------

### WATTS 709 (DCV)

- Low/Medium Hazard Installations
- Testable Device
- Suitable for back pressure & back syphonage installations
- Can be installed vertically or horizontally
- Can be installed below ground in a suitable enclosure
- Continuous and non continuous pressure installations
- Cast iron construction
- 65mm - 250mm Table D Flanged
- Epoxy Coated
- Comply to AS2845.1 ASSE
- 0.5°C to 43°C constant
- 60°C Intermittent
- Max pressure 1200kPa



### 709 CAST IRON DCV LESS FITTINGS (DEVICE ONLY)

709-65CLF	65mm
709-80CLF	80mm
709-100CLF	100mm
709-150CLF	150mm
709-200CLF	200mm
709-250CLF	250mm

### 709 DCV CAST IRON DCV WITH B/FLY VALVES LUG TYPE & STRAINER

709-65CBL	65mm
709-80CBL	80mm
709-100CBL	100mm
709-150CBL	150mm
709-200CBL	200mm
709-250CBL	250mm

### 709 CAST IRON DCV WITH B/FLY VALVES WAFER TYPE & STRAINER

709-65CBW	65mm
709-80CBW	80mm
709-100CBW	100mm
709-150CBW	150mm
709-200CBW	200mm
709-250CBW	250mm

Code	Description	Size
------	-------------	------

**SPARE PARTS 709 DCV**
**709 1ST OR 2ND CHECK KITS COMPLETE 1 ONLY**

0887901	709	100mm
0887902	709	150mm
0887903	709	200mm
0887904	709	250mm

**709 RUBBER PARTS FOR 1 CHECK**

0887906	709	100mm
0887907	709	150mm
0887908	709	200mm
0887909	709	250mm

**709 COMPLETE RUBBER PARTS**

0887916	709	100mm
0887917	709	150mm
0887918	709	200mm
0887919	709	250mm

**709 SEAT KITS FOR 1 CHECK**

0887911	709	100mm
0887912	709	150mm
0887913	709	200mm
0887914	709	250mm

Code	Description	Size
------	-------------	------

### AMES 2000SS / WATTS 774 DCV

- Low/ Medium Hazard Installations
- Testable Device
- Suitable for back pressure & back syphonage installations
- Can be installed vertically or horizontally
- Can be installed below ground in a suitable enclosure
- Continuous and non continuous pressure installations
- 300 Series Stainless Steel Body
- Temperature Range: 0.5 °C to 43 °C
- Pressure Range: 1200 Kpa
- Huge flow rates with low head loss
- 100mm valve weights 26kg
- Protects against Back-pressure and Back-syphonage
- Table D Flange pattern



### 2000SS STAINLESS STEEL DCV LESS FITTINGS DEVICE ONLY

2000SSLF65	65mm
2000SSLF80	80mm
2000SSLF100	100mm
2000SSLF150	150mm
2000SSLF200	200mm
2000SSLF250	250mm
2000SSLF300	300mm

### 2000SS STAINLESS STEEL DCV ASSEMBLY WITH BUTTERFLY VALVES LUG TYPE AND Y STRAINER

2000SS65BLY	65mm
2000SS80BLY	80mm
2000SS100BLY	100mm
2000SS150BLY	150mm
2000SS200BLY	200mm
2000SS250BLY	250mm

### 2000SS STAINLESS STEEL DCV ASSEMBLY WITH ISOLATION VALVES AND Y STRAINER

2000SS65IY	65mm
2000SS100IY	100mm
2000SS150IY	150mm
2000SS200IY	200mm
2000SS250IY	250mm

Code	Description	Size
------	-------------	------

### 2000SS DETECTOR CHECK

Used in the fire industry to detect the theft of water.  
Has a metered bypass with device of same hazard rating.

2000SS65F		65mm
2000SS80F		80mm
2000SS100F		100mm
2000SS150F		150mm
2000SS200F		200mm



### AMES 2000SS SPARE PARTS

#### 2000SS 1ST CHECK COMPLETE

88005356	2000SS	65-100mm
88005358	2000SS	150mm
7015569	2000SS	200-300mm

#### 2000SS 2ND CHECK COMPLETE

88005357	2000SS	65-100mm
88005360	2000SS	150mm
7010102	2000SS	200-300mm

### WATTS 774 SPARE PARTS

#### 774 COMPLETE 1ST CHECK

88005356	774	65-100mm
88005360	774	150mm
0888827	774	200-300mm

#### 774 COMPLETE 2ND CHECK

88005357	774	65-100mm
0888823	774	50mm
0888827	774	200-300mm

Code	Description	Size
------	-------------	------

### AMES C200 / WATTS C757 DCV

- Low/ Medium Hazard Installations
- Testable Device
- Suitable for back pressure & back syphonage installations
- Can be installed vertically or horizontally
- Can be installed below ground in a suitable enclosure
- Continuous and non continuous pressure installations
- 304 Stainless steel body
- Temperature Range: 0.5 °C to 43 °C
- Pressure Range: 1200 Kpa
- Roll Grooved
- Tri-link Checks provide lowest pressure loss
- Protects against Back-pressure and Back-syphonage



C757SS65	includes roll groove reducers 65mm	
C757SS80	includes roll groove reducers 80mm	
C757SS100		100mm
C757SS150		150mm
C757SS200		200mm
C757SS250		250mm

### C200 DETECTOR CHECK

Used in the fire industry to detect the theft of water.  
Has a metered bypass with device of same hazard rating.

C757SS65F	For fire installations	65mm
C757SS80F	For fire installations	80mm
C757SS100F	For fire installations	100mm
C757SS150F	For fire installations	150mm
C757SS200F	For fire installations	200mm
C757SS250F	For fire installations	250mm

### AMES C200 SPARE PARTS

#### C200 1ST CHECK COMPLETE

7018111	C200	65-100mm
7018114	C200	150mm
7010002	C200	200mm
7010003	C200	250mm

#### C200 2ND CHECK COMPLETE

7018113	C200	65-100mm
7018116	C200	150mm
7010006	C200	200mm
7010007	C200	250mm

#### C200 RUBBER PARTS FOR 1 CHECK (1ST OR 2ND)

7018123	C200	65-100mm
7018124	C200	150mm
7010010	C200	200mm
7010011	C200	250mm

#### C200 TEST COCK

7018152	C200	65-100mm
7018153	C200	150-250mm

Code	Description	Size
<b>C200 SHUT OFF DISC</b>		
7017855	C200	65-100mm
7017903	C200	150mm
<b>C200 CHECK MODULE O-RING</b>		
7017861	C200	65-100mm
7017910	C200	150mm
<b>C200 COVER SLEEVE O-RING</b>		
7017896	C200	65-100mm
7017921	C200	150mm

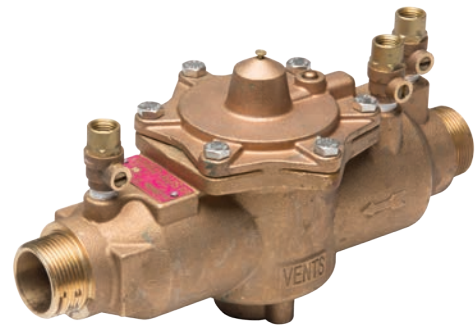
Boundary Kits also available on request.

### WATTS 009/AMES 4000B RPZ

- High Hazard Device
- Testable Device
- Protects against back pressure & back Syphonage
- Must only be Installed horizontally
- Must be installed above ground with a minimum of 300mm clearance to relief port
- Continuous and non continuous pressure installation
- DZR Brass Construction
- 0.5°C to 82°C
- Maximum pressure 1200 kPa
- 15mm-50mm BSP threaded

### 009 RPZ LESS FITTINGS

009-15BLF	15mm
009-20BLF	20mm
009-25BLF	25mm
009-32BLF	32mm
009-40BLF	40mm
009-50BLF	50mm



### 009 RPZ WITH 2 BALL VALVES AND INLINE STRAINER

009-15B	15mm
009-20B	20mm
009-25B	25mm
009-32B	32mm
009-40B	40mm
009-50B	50mm

Code	Description	Size
<b>WATTS 009 BRASS DCV C/W 2 BALL VALVES, 2 UNIONS &amp; INLINE STRAINER</b>		
009-15BU		15mm
009-20BU		20mm
009-25BU		25mm
009-32BU		32mm
009-40BU		40mm
009-50BU		50mm
<b>WATTS ASSEMBLED WATTS 009 RPZ BOUNDARY TRAIN COMPLETE</b>		
009-15BUB		15mm
009-20BUB		20mm
009-25BUB		25mm
009-32BUB		32mm
009-40BUB		40mm
009-50BUB		50mm
<b>WATTS 009 RPZ</b>		
	<ul style="list-style-type: none"> <li>• Epoxy Coated Cast Iron</li> <li>• 0.5°C to 43°C constant</li> <li>• 60°C intermittent</li> <li>• Maximum Pressure 1200 kPa</li> <li>• 65mm-80mm table D flanged</li> </ul>	
<b>009 CAST IRON RPZ LESS FITTINGS (DEVICE ONLY)</b>		
009-65CLF		65mm
009-80CLF		80mm
<b>009 CAST IRON RPZ WITH BUTTERFLY VALVES AND Y STRAINER</b>		
009-65C		65mm
009-80C		80mm





Code	Description	Size
<b>WATTS 009 SPARE PARTS</b>		
<b>009 1ST CHECKS COMPLETE</b>		
0887291	009 AUS	15mm
0887000	009 M2	20mm
0888520	009 M3	20mm
0887005	009 AUS	20-25mm
0887789	009 M2	25mm
0887300	009 M2	32-40mm
0887270	009 M1	32-50mm
0887006	009 AUS	32-50mm
0887540	009 M2	50mm
0887019	009 AUS	65-80mm

<b>009 2ND CHECK COMPLETE</b>		
0887292	009 AUS	15mm
0887001	009 M2	20mm
0888521	009 M3	20mm
0887007	009 AUS	20-25mm
0887790	009 M2	25mm
0887301	009 M2	32-40mm
0887271	009 M1	32-50mm
0887008	009 AUS	32-50mm
0887541	009 M2	50mm
0887020	009 AUS	65-80mm

<b>009 1ST CHECK RUBBER PARTS</b>		
0887293	009 AUS	15mm
0887003	009 M2	20mm
0888522	009 M3	20mm
0887017	009 AUS	20-25mm
0887527	009 AUS	25mm
0887791	009 M2	25mm
0887304	009 M2	32-40mm
0887274	009 M1	32-50mm
0887018	009 AUS	32-50mm
0887542	009 M2	50mm
0887281	009 AUS	65-80mm

<b>009 2ND CHECK RUBBER PARTS</b>		
0887293	009 AUS	15mm
0887003	009 M2	20mm
0888522	009 M3	20mm
0887180	009 AUS	20-25mm
0887528	009 AUS	25mm
0887792	009 M2	25mm
0887305	009 M2	32-40mm
0887275	009 M1	32-50mm
0887183	009 AUS	32-50mm
0887543	009 M2	50mm
0887205	009 AUS	65-80mm

### AIR GAP/TUN DISH TO SUIT WATTS 009/4000 RPZ

Air Gaps for Reduced Pressure Zone Assemblies provide an unobstructed, physical separation between the discharge end of a potable water supply line and an open receiving vessel.

7014267	15 - 20mm
691853	25 - 40mm
009AGF	32 - 80mm
009AGK	100 -150mm

Code	Description	Size
<b>009 COMPLETE RUBBER PARTS</b>		
0887297	009 AUS	15mm
0886999	009 M2	20mm
0888526	009 M3	20mm
0887182	009 AUS	20-25mm
0887787	009 M2	25mm
0887309	009 M2	32-40mm
0887185	009 AUS	32-50mm
0887280	009 M1	32-50mm
0887547	009 M2	50mm
0887207	009 AUS	65-80mm
<b>009 COMPLETE RELIEF VALVES</b>		
0887294	009 AUS	15mm
0887002	009 M2	20mm
0888524	009 M3	20mm
0887015	009 AUS	20-25mm
0887785	009 M2	25mm
0887307	009 M2	32-40mm
0887277	009 M1	32-50mm
0887016	009 AUS	32-50mm
0887545	009 M2	50mm
0887021	009 AUS	65-80mm
<b>009 RELIEF RUBBER PARTS</b>		
0887295	009 AUS	15mm
0886998	009 M2	20mm
0888523	009 M3	20mm
0887181	009 AUS	20-25mm
0887786	009 M2	25mm
0887306	009 M2	32-40mm
0887276	009 M1	32-50mm
0887184	009 AUS	32-50mm
0887544	009 M2	50mm
0887206	009 AUS	65-80mm
<b>009 CHECK SEAT KITS</b>		
0887208	009 AUS	65-80mm
0887209	009 AUS	65-80mm
<b>009 UNIVERSAL SPARES: CONTAINS ALL COMPLETE RUBBER PARTS KITS FOR SIZE OF VALVE:</b>		
0887804	009	20mm
0887805	009	25mm
0887806	009	32mm
0887807	009	40mm
0887808	009	50mm
<b>009 RETAINERS</b>		
1047053	009 AUS	15mm
1047394	009 M2/M3	20mm
1047114	009 AUS	20-25mm
1047001	009 AUS	32-40mm
1047401	009 M2	32-40mm
1047001	009 M1,M2	50mm
<b>009 TEST COCKS</b>		
0006630	009 1/8"	15-25mm
0006635	009 1/4"	32-50mm

Code	Description	Size
<b>AMES 4000B SPARE PARTS</b>		
<b>4000B 1ST CHECK COMPLETE</b>		
7016635	4000B	15mm
7016636	4000B M2	20mm
7016637	4000B M3	20mm
7016638	4000B	25mm
7018650	4000B M2	25mm
7016639	4000B	32-40mm
7016640	4000B	50mm
<b>4000B 2ND CHECKS COMPLETE</b>		
7016641	4000B	15mm
7016642	4000B	M2 20mm
7016643	4000B	M3 20mm
7016644	4000B	25mm
7018651	4000B	M2 25mm
7016645	4000B	32-40mm
7016646	4000B	50mm
<b>4000B COMPLETE RELIEF VALVE</b>		
7016363	4000B	15mm
7016364	4000B M2	20mm
7016365	4000B M3	20mm
7016366	4000B	25mm
7018654	4000B M2	25mm
7016367	4000B	32-40mm
7016368	4000B	50mm
<b>4000B COMPLETE RUBBER PARTS</b>		
7016375	4000B	15mm
7016376	4000B M2	20mm
7016377	4000B M3	20mm
7016378	4000B	25mm
7018656	4000B M2	25mm
7016379	4000B	32-40mm
7016380	4000B	50mm
<b>4000B RETAINERS</b>		
7016654	4000B	15mm
7016655	4000B	20mm
7016665	4000B M2/M3	20mm
7016656	4000B	25mm
7016666	4000B M2	25mm
7016657	4000B	32-40mm
7016658	4000B	50mm
<b>4000B TEST COCKS</b>		
7017250	4000B	1/8" 15-25mm
7017251	4000B	1/4" 32-50mm

Code	Description	Size
------	-------------	------

### AMES 400SS / WATTS 994 RPZ

- High Hazard Device
- Testable Device
- Protects against back pressure & back Syphonage
- Must only be Installed horizontally
- Must be installed above ground with a minimum of 300mm clearance to relief port
- Continuous and non continuous pressure installation
- 300 Series Stainless Steel Body
- Temperature Range: 0.5 °C to 43 °C
- Pressure Range: 1200 Kpa
- Table D Flanged
- 65 - 250mm
- 100mm valve weights 30kg



### 4000SS STAINLESS STEEL RPZ LESS FITTING (DEVICE ONLY)

4000SSLF65	65mm
4000SSLF80	80mm
4000SSLF100	100mm
4000SSLF150	150mm
4000SSLF200	200mm
4000SSLF250	250mm

### 4000SS STAINLESS STEEL RPZ WITH BUTTERFLY VALVES LUG TYPE & Y STRAINER

4000SS65BLY	65mm
4000SS80BLY	80mm
4000SS100BLY	100mm
4000SS150BLY	150mm
4000SS200BLY	200mm
4000SS250BLY	250mm

### 4000SS STAINLESS STEEL RPZ WITH ISOLATION VALVES & Y STRAINER

4000SS65IY	65mm
4000SS80IY	80mm
4000SS100IY	100mm
4000SS150IY	150mm
4000SS200IY	200mm
4000SS250IY	250mm

### 4000SS DETECTOR RPZ WITH BYPASS

Used in the fire industry to detect the theft of water.  
Has a metered bypass with device of same hazard rating.

4000SS65F	65mm
4000SS80F	80mm
4000SS100F	100mm
4000SS150F	150mm
4000SS200F	200mm
4000SS200F	250mm

Code	Description	Size
<b>4000SS SPARE PARTS</b>		
<b>4000SS 1ST CHECK COMPLETE</b>		
7015561	4000SS	65-100mm
7015566	4000SS	150mm
7015570	4000SS	200-250mm
<b>4000SS 2ND CHECK COMPLETE</b>		
7015560	4000SS	65-100mm
7015565	4000SS	150mm
7015569	4000SS	200-250mm
<b>4000SS COMPLETE RELIEF VALVE</b>		
7013354	4000SS	65-250mm
<b>4000SS RELIEF RUBBER PARTS</b>		
7010113	4000SS	65-250mm
<b>4000SS SENSING LINE</b>		
7013343	4000SS	65-150mm
7013522	4000SS	200-250mm
<b>4000SS RELIEF BODY O-RING</b>		
A400084	4000SS	65-250mm
<b>WATTS 994 RPZ SPARE PARTS</b>		
<b>994 1ST CHECK COMPLETE</b>		
0888830	994	65-100mm
0888831	994	150mm
0888832	994	200mm
<b>994 2ND CHECK COMPLETE</b>		
0888833	994	65-100mm
0888834	994	150mm
0888835	994	200mm
<b>994 COMPLETE RELIEF VALVE</b>		
0888840	994	65-200mm
<b>994 RELIEF RUBBER PARTS</b>		
0888839	994	65-200mm

Code	Description	Size
------	-------------	------

### AMES C400/WATTS 957 RPZ

- High Hazard Device
- Testable Device
- Protects against back pressure & back Syphonage
- Must only be Installed horizontally
- Must be installed above ground with a minimum of 300mm clearance to relief port
- Continuous and non continuous pressure installation
- 304 Stainless steel body
- Temperature Range: 0.5 °C to 43 °C
- Pressure Range: 1200 Kpa
- 65-250mm Rolled grooved
- Tri-link Checks provide lowest pressure loss



C957SS65	includes roll grooved reducers 65mm	
C957SS80	includes roll grooved reducers 80mm	
C957SS100		100mm
C957SS150		150mm
C957SS200		200mm
C957SS250		250mm

### C400 DETECTOR RPZ WITH BYPASS

Used in the fire industry to detect the theft of water.

Has a metered bypass with device of same hazard rating.

C957S65F		65mm
C957SS80F		80mm
C957SS100F		100mm
C957SS150F		150mm
C957SS200F		200mm
C957SS250F		250mm

### AMES C400 SPARE PARTS

#### C400 1ST CHECK COMPLETE

7018112	C400	65-100mm
7018115	C400	150mm
7010026	C400	200mm
7010027	C400	250mm

#### C400 2ND CHECK COMPLETE

7018120	C400	65-100mm
7018121	C400	150mm
7010032	C400	200mm
7010033	C400	250mm

#### C400 RUBBER PARTS FOR 1 CHECK (1ST OR 2ND)

7018391	C400	65-100mm
7018392	C400	150mm
7010038	C400	200mm
7010039	C400	250mm

#### C400 COMPLETE RUBBER PARTS

7010041	C400	65-100mm
7010043	C400	150mm
7010044	C400	200mm
7010045	C400	250mm

Code	Description	Size
<b>C400 COMPLETE RELIEF VALVE</b>		
7018107	C400	65-250mm
<b>C400 RELIEF RUBBER PARTS</b>		
7010047	C400	65-250mm
<b>C400 TEST COCKS</b>		
7018152	C400	65-100mm
7018153	C400	150-250mm
<b>C400 SENSING LINE</b>		
7018890	C400	65-100mm
7018892	C400	150mm
7018893	C400	200-250mm
<b>C400 SHUT OFF DISC</b>		
7018329	C400	65-100mm
<b>WATTS 957 SPARE PARTS</b>		
<b>957 1ST CHECK COMPLETE</b>		
0889370	957	65-100mm
0889374	957	150mm
7018135	957	200mm
0899215	957	250mm
<b>957 2ND CHECK COMPLETE</b>		
0889371	957	65-100mm
0889375	957	150mm
0899218	957	200mm
0899219	957	250mm
<b>957 RUBBER PARTS FOR 1 CHECK (1ST OR 2ND)</b>		
0889372	957	65-100mm
0889376	957	150mm
0899222	957	200mm
0899223	957	250mm
<b>957 COMPLETE RUBBER PARTS</b>		
0889373	957	65-100mm
0889377	957	150mm
0899246	957	200mm
0899247	957	250mm
<b>957 RELIEF RUBBER PARTS</b>		
0899236	957	65-250mm



Code	Description	Size
------	-------------	------

### WATTS 909 RPZ

- High Hazard Device
- Testable Device
- Protects against back pressure & back Syphonage
- Suitable for Vertical or Horizontal Installation
- Must be installed above ground with a minimum of 300mm clearance to relief port
- Continuous and non continuous pressure installation
  
- Bronze
- 0.5°C to 60°C continuous, 82°C intermittent
- 909HW 0.5°C to 99°C
- Maximum pressure 1200kPa
- 20mm - 50mm BSP threaded



### WATTS 909 RPZ LESS FITTINGS

909LF-20BLF	20mm
909LF-25BLF	25mm
909LF-32BLF	32mm
909LF-40BLF	40mm
909LF-50BLF	50mm

### WATTS 909 HOT WATER MODEL RPZ LESS FITTINGS

909LF-20BLFHW	20mm
909LF-25BLFHW	25mm
909LF-32BLFHW	32mm
909LF-40BLFHW	40mm
909LF-50BLFHW	50mm

### WATTS 909 RPZ WITH 2 BALL VALVES AND INLINE STRAINER

909LF-20B	20mm
909LF-25B	25mm
909LF-32B	32mm
909LF-40B	40mm
909LF-50B	50mm

### WATTS 909 SPARE PARTS

#### 909 1ST CHECK COMPLETE

0887120	909	20-25mm
0887133	909 M1	32-50mm
0887122	909 Hot water	20-25mm
0887135	909 M1 Hot Water	32-50mm

#### 909 2ND CHECK COMPLETE

0887121	909	20-25mm
0887134	909 M1	32-50mm
0887123	909 Hot Water	20-25mm
0887136	909 M1 Hot Water	32-50mm

#### 909 COMPLETE RUBBER PARTS

0887130	909	20-25mm
0887144	909 M1	32-50mm

#### 909 COMPLETE RELIEF VALVE

0887126	909	20-25mm
0887138	909 M1	32-50mm

Code	Description	Size
<b>909 RELIEF RUBBER PARTS</b>		
0887131	909	20-25mm
0887141	909 M1	32-50mm
<b>909 RELIEF SEAT</b>		
0887372	909	20-25mm
0887371	909 M1	32-50mm
<b>909 SEAT KITS FOR 1 CHECK (1ST OR 2ND)</b>		
0887124	909	20-25mm
0887139	909 M1	32-50mm
0887125	909	20-25mm
0887140	909 M1	32-50mm

### VENT ELBOWS TO SUIT WATTS 909/009 RPZ

Used with Watts air gaps for vertical installation of Reduced Pressure Zone Assemblies.

909ELC	20mm-25mm
909ELF	32mm-50mm

### 909 RPZ CAST IRON

- High Hazard Device
- Testable Device
- Protects against back pressure & back Syphonage
- Suitable for Vertical or Horizontal Installation
- Must be installed above ground with a minimum of 300mm clearance to relief port
- Continuous and non continuous pressure installation
- Epoxy Coated Cast Iron
- 0.5°C to 43°C constant
- 60°C intermittent
- Maximum Pressure 1200 kPa
- 65mm-250mm Table D Flanged



### 909 CAST IRON RPZ LESS FITTINGS (DEVICE ONLY)

909-65CLF	65mm
909-80CLF	80mm
909-100CLF	100mm
909-150CLF	150mm
909-200CLF	200mm
909-250CLF	250mm

### 909 CAST IRON RPZ WITH 2 BUTTERFLY VALVES LUG TYPE & Y STRAINER

909-65BLY	65mm
909-80BLY	80mm
909-100BLY	100mm
909-150BLY	150mm
909-200BLY	200mm
909-250BLY	250mm

Code	Description	Size
<b>909 SPARE PARTS CAST IRON</b>		
<b>909 1ST CHECK COMPLETE</b>		
0887210	909	65-80mm
0887212	909	100mm
0887213	909	150mm
0887214	909	200mm
0887215	909	250mm
<b>909 2ND CHECK COMPLETE</b>		
0887211	909	65-80mm
0887216	909	100mm
0887217	909	150mm
0887218	909	200mm
0887219	909	250mm
<b>909 1ST CHECK RUBBER PARTS</b>		
0887220	909	65-80mm
0887221	909	100mm
0887223	909	150mm
0887224	909	200mm
0887225	909	250mm
<b>909 2ND CHECK RUBBER PARTS</b>		
0887226	909	65-80mm
0887227	909	100mm
0887228	909	150mm
0887229	909	200mm
0887230	909	250mm
<b>909 COMPLETE RUBBER PARTS</b>		
0887750	909	65-80mm
0887751	909	100mm
0887752	909	150mm
0887753	909	200mm
0887754	909	250mm
<b>909 COMPLETE RELIEF VALVE</b>		
0887235	909	65-80mm
0887236	909	100-150mm
0887237	909	200-250mm
<b>909 RELIEF RUBBER PARTS</b>		
0887231	909	65-80mm
0887232	909	100-150mm
0887233	909	200-250mm
0887234	909 M1	100-250mm
<b>909 SEAT FOR 1 CHECK (1ST OR 2ND)</b>		
0887730	909	65-80mm
0887731	909	100mm
0887732	909	150mm
0887733	909	200mm
0887734	909	250mm

Code Description Size

**BACKFLOW CAGE**

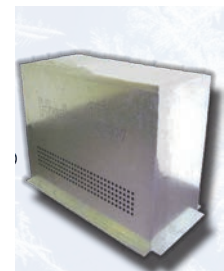
- Easy shipping
- Fully collapsable
- Easy assembly
- Rugged steel construction
- Fully galvanised
- Available in two sizes
- Hinged top for easy access



BFC79	SMALL	790mm Length x 340mm Width x 750mm Height
BFC110	LARGE	1100mm Length x 390mm Width x 950mm Height

**FROST FRIENDLY BACKFLOW CAGE**

- Protects backflow from extreme weather
- Has sight/drainage holes when backflow spills water
- Easy to assemble
- Vandal resistant
- Top entry access



BFCFF79	SMALL	790mm Length x 340mm Width x 750mm Height
BFCFF110	LARGE	1100mm Length x 390mm Width x 950mm Height

**TWIN RECESSED CABINET**

- Stainless Steel Construction
- Suitable for valve sizes 15, 20 & 25mm.
  - Stainless steel Construction
  - Anti-vandal Keyed locking mechanism
  - Wall recessed mounting with side inlets and 40mm waste
  - Perspex window
  - Serviceable



BFCAB 600 (H) x 630 (W) x 90 (D)

**TWIN RECESSED CABINET**

BFCAB009B15	2 x 15mm 009 RPZ Backflow included
BFCAB009B20	2 x 20mm 009 RPZ Backflow included
BFCAB009B25	2 x 25mm 009 RPZ Backflow included
BFCAB009B15-S	1 x 15mm 009 RPZ Backflow included
BFCAB009B20-S	1 x 20mm 009 RPZ Backflow included
BFCAB009B25-S	1 x 25mm 009 RPZ Backflow included



Code	Description	Size
------	-------------	------

### AMES SERIES ATG-1 TEST KIT (TK9)

- Compact portable testing device for testing RPZ and DCV assemblies
- The ATG-1 is easily connected to any RPZ device enabling accurate testing of 'zone' differential pressure, relief valve opening differential, fouled check valves or similar problems that visual inspections cannot locate.
- Supplied in rugged carrying case for easy handling and accessibility
- Suitable for supply pressure up to 175 psi (12.1 bars)
- Maximum working temperature: 99°C



ATG1Z	Analogue Test Kit	
-------	-------------------	--

### BACKFLOW PREVENTER TEST KIT TK99E

Watts TK-99E provides dependable accuracy when testing pressure vacuum breakers, anti-spill vacuum breakers, reduced

pressure backflow preventers or double check assemblies and is accurate to  $\pm 1\%$  of full scale.

- Color-coded valves and hoses for simplified operation
- Top mounted drain/purge valves and conveniently located line pressure gauge for ease of use
- A large 4.5" anti-parallax dial which indicates descending measurement, accurate to  $\pm 1\%$  of full scale
- Conveniently located needle valves for easy access
- Lightweight needle valves encased in a chemical-resistant body for trouble-free operation
- Replaceable hose filters and valve stem seals for field repair
- Complete kit contains gauge with color-coded valves and hoses, hose adapters, shock cord for easy mounting, supply pressure gauge.
- Maximum Working Pressure: 200psi (13.79 bar)



WTK99E	Backflow Preventer Test Kit	
--------	-----------------------------	--

### BACKFLOW PREVENTER TEST KIT SERIES TK-9A

Model TK-9A Backflow Preventer Test Kit is a compact portable device made for testing all reduced pressure zone backflow prevention assemblies, double check valve assemblies, pressure vacuum breakers and spill-resistant vacuum breakers to USC and ASSE 5000 Standards. The TK-9A comes with adapter fittings to easily connect to all testable assemblies. Rugged weather proof gauge design with durable 600 PSI ball valves for on/off use, and needle valves for precise metering. Accuracy is  $\pm 2\%$ . The unit includes a shock resistant carrying case for easy handling and accessibility.

Pressure-Temperature

Maximum Working Pressure: 175psi (12.1 bar) Maximum Working Temperature: 210°F (98°C)

WTK9A	Backflow Preventer Test Kit	
-------	-----------------------------	--



### HYDROFLOW HOSE SET FOR HFD-TK

HFD-HS	Hose Set for HFD-TK	
--------	---------------------	--

Code Description Size

**WATTS TRAP PRIMER**

The Series LFTP300 operates by sensing the pressure drop in the supply line from downstream fixtures or appliances. The pressure reduction above the Valve Disc causes the disk to move upward opening the Lower Disc Seal and closing off the Upper Disc Seal. With the Lower Disc Seal open the stored air pressure in the Air Chamber pushes a portion of the contained volume of water from the lower chamber out through the opening beneath the Lower Disc Seal to prime the trap. When there is no longer a demand in the supply line and the full line pressure is restored, the Valve Disc lowers, opening the Upper Disc Seal, allowing flow through the One Way Seal, seating the Lower Disc Seal and recharging the Air Chamber for the next pressure drop cycle. The Series LFTP300 incorporates a built in vacuum breaker which does not satisfy compliance to ASME A112.1.2. The Series LFTP300 features Lead Free\* construction to comply with Lead Free\* installation requirements.



A300T 15mm

**BACKFLOW TOOLS**

HFD-TKN Test Nipple Kit



WA103 Check Removal Tool 2 1/2" - 4"

WA104 Check Removal Tool 6" - 8"



Code	Description	Size
------	-------------	------

### PRESSURE GAUGES

Pressure gauges for all non corrosive fluids and for temperatures between -10°C to +80°C. They are resistant to pulsating pressure, shocks, pressure shock and atmospheric corrosion

Stainless Steel Back/liquid filled 1/4" BSP Thread

PGS40	0 - 36 psi
PGS80	0 - 87 psi
PGS150	0 - 145 psi
PGS250	0 - 230 psi
PGS400	0 - 360 psi
PGS500	0 - 500 psi
PGS800	0 - 800 psi
PGS1500	0 - 1450 psi



### VACUUM GAUGES

VG100	0 - 100kPa
VG100L	Large



### PRESSURE RATIO VALVES

10 - 1 Ratio, Nickel Plated  
Working pressure 15 BAR 218 psi

RVN15	15mm
RVN20	20mm



### PRESSURE RATIO VALVES WITH UNION

10 - 1 Ratio, Nickel Plated  
Working pressure 25 BAR 362 psi

RV15	15mm
RV20	20mm
RV25	25mm
RV32	32mm
RV40	40mm
RV50	50mm



### FIVE WAY PUMP CONNECTOR

Maximum pressure 10 BAR 145 psi

PUC25	25mm
-------	------





Code	Description	Size
------	-------------	------

### PRESSURE REDUCING VALVE (W-M115)

The valve sets downstream pressure by adjusting the control pilot valve. When downstream pressure is below the set pressure, the opening of the valve seat, flow and downstream pressure increase. When downstream pressure is above the set pressure, the opening of valve seat decreases, flow and downstream pressure reduce. Valve downstream pressure is stable in set range automatically.

- Nominal Diameter: DN50-DN300
- Maximum Working Pressure: 1.6MPa
- Working Temperature: 0°C-80°C
- Fluid Medium: Water
- Pressure Regulating Range: 10PSI-125PSI (0.07MPa-0.9MPa)
- Factory Setting: 50PSI (0.35MPa)
- Table D

ACV115-265A	65mm
ACV115-280A	80mm
ACV115-2100A	100mm
ACV115-2150A	150mm



### PRESSURE RELIEF VALVE (W-M116)

Designed to adjust, set and maintain piping upstream pressure when it's installed in the pipeline; while it is installed in the by-pass line, the function is pressure relief. It's generally used in city water supply, industrial and agricultural water transmission pipeline, etc.

- Nominal Diameter: DN50-DN300
- Maximum Working Pressure: 1.6MPa
- Working Temperature: 0°-80°
- Fluid Medium: Water
- Pressure Regulating Range: 20PSI-200PSI (0.14MPa-1.4MPa)
- Table D

ACV116-265A	65mm
ACV116-280A	80mm
ACV116-2100A	100mm
ACV116-2150A	150mm



Code	Description	Size
------	-------------	------

### PRESSURE REDUCING VALVE SERIES LFN45B-G-AUS

Series LFN45B Water Pressure Reducing Valves are designed to control and reduce the incoming water pressure to a compliant level to protect plumbing system components and assist in reducing water consumption. The LFN45B features Lead Free\* construction to comply with Lead Free\* installation requirements. This series is suitable for water supply pressures up to 2760/2070 kPa and come with factory pre-set at 500 kPa.

The standard bypass feature permits the flow of water back through the valve into the main when pressures, due to thermal expansion on the outlet side of the valve, exceed the pressure in the main supply.

- 'Lead Free' cast copper silicon alloy body construction
  - Integral stainless steel strainer
  - Thermoplastic seat & cage
  - Bypass feature controls thermal expansion pressure\*\*
  - Sealed spring cage on all models for accessible outdoor or pit installations
  - Serviceable in line
- Pressure Reducing Range: 172kPa~517kPa
  - Standard Pressure Setting: 500kPa
  - Maximum Pressure: DN15-DN25: 2760kPa DN32-DN50: 2070kPa
  - Working Temperature: 0.5°~82°

N45B15	15mm
N45B20	20mm
N45B25	25mm
N45B32	32mm
N45B40	40mm
N45B50	50mm



### PRESSURE REDUCING VALVE SERIES PRVA

Series PRVAS20F Water Pressure Reducing Valves are designed to control and reduce the incoming water pressure to a compliant level to protect plumbing system components and assist in reducing water consumption. This series is suitable for water supply pressures up to 2000 KPa and come with factory pre-set at 500 KPa.

- High performance and high flow capacity
- Adjustable Range: 150-600KPa
- No breather hole
- Low noise profile
- Serviceable in-line for PRVAS
- Compact design & Brass body construction
- Internal stainless steel strainer
- Brass disc with EPDM diaphragm
- Can be installed in any orientation
- Simple screw pressure adjustment
- Integrated 1/4" gauge ports provided
- Temperature Range: 0.5°C – 80°C
- Maximum Working Pressure: 2000 KPa (290psi)
- Reduced Pressure Setting: 500 Kpa ±10% (72.5psi)
- Adjustable Outlet Pressure Range: 150-600 KPa (21.8-87psi)

PRVA20	20mm
PRVA20-4	Watts Replacement 4 in 1 Kitset



Code Description Size

### CIMBERIO 747 BALANCING VALVE

- Nominal Pressure: PN25
- Operating temperature: -10 to 120°C
- Threads: ISO 7 - Rp

CIM747.15	15mm
CIM747.20	20mm
CIM747.25	25mm
CIM747.32	32mm
CIM747.40	40mm
CIM747.50	50mm



### CIMBERIO 746 BALANCING VALVE FIXED ORRIFICE

- DZR" brass alloy that complies with standard EN 12165-CW602N-M
- Nominal Pressure: PN25
- Operating temperature: -10 to 120°C

CIM746.15	15mm
CIM746.20	20mm
CIM746.25	25mm
CIM746.32	32mm
CIM746.40	40mm
CIM746.50	50mm



### CIMBERIO 790 AUTOMATIC BALANCING VALVE

- Nominal Pressure: PN25
- Operating temperature: -10 to 120°C
- Threads: ISO 228

CIM790.15	15mm
CIM790.20	20mm
CIM790.25	25mm
CIM790.25L	25Lmm
CIM790.32	32mm
CIM790.40	40mm
CIM790.50	50mm

Please request your flow rate



### CIM 3790 ABV WAFER STYLE BODY

- Nominal Pressure: PN16
- Operating temperature: -20 ÷ 120°C

CIM3790B.50W	50mm
CIM3790B.65W	65mm
CIM3790B.80W	80mm
CIM3790B.100W	100mm



Code	Description	Size
------	-------------	------

## 123-AUS KITSETS

### 123-AUS 4 IN 1 PACK

Key components:

Non return Valve

123-AUS Pressure Reducing valve (with integral stainless steel strainer)

Isolation Valve

123-AUS4	Watts 123 20mm Low Pressure Regulator w/Isolation & non-return	
----------	--	--



### 123-AUS APARTMENT PACK

Key components:

2 x 123-AUS4 (as detailed above). One for hot water line and one for the cold water line.

1 x Watts 20mm Tempering Valve (Code: WTV20)

NOTE: Available on request as kitset



### 123-AUS METERED APARTMENT PACK

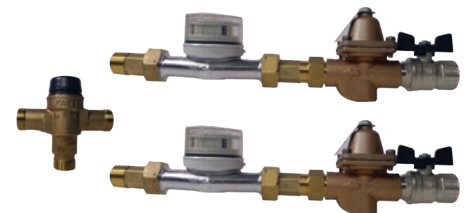
Key components:

2 x 123-AUS4 (as detailed above) with a Zenner Apartment Water Meter.

One for hot water line and one for the cold water line.

1 x Watts 20mm Tempering Valve (Code: WTV20)

NOTE: Available on request as kitset



Reed Switch version also available