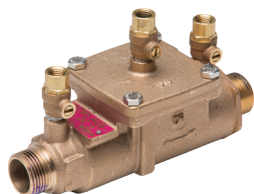


WATTS®

the leaders in backflow prevention

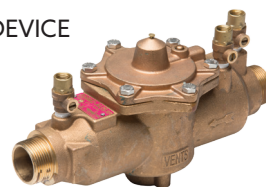
MODEL 007 DOUBLE CHECK VALVE

- 15mm-50mm
- Single Access Cover
- DZR Brass Body Construction
- Comply to AS2845.1, ASSE
- 0.5°C to 82°C



MODEL 009 REDUCED PRESSURE ZONE DEVICE

- 15mm-50mm
- Single Access Cover
- DZR Brass Body Construction
- Comply to AS2845.1, ASSE
- 0.5°C to 82°C



MODEL 007/709 DOUBLE CHECK VALVE

- 65mm-250mm
- Cast iron construction
- Epoxy Coated
- Complies with AS2845.1, ASSE
- 0.5°C to 43°C constant
- 60°C Intermittent



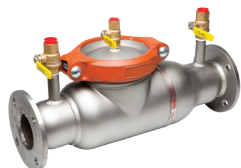
MODEL 009/909 REDUCED PRESSURE ZONE DEVICE

- 65mm-250mm
- Cast Iron Construction
- Epoxy Coated
- Complies with AS2845.1, ASSE
- 0.5°C to 43°C constant
- 60°C intermittent



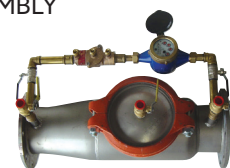
MODEL 2000SS DOUBLE CHECK VALVE

- 65mm-300mm
- Lowest Recorded Head Loss
- Stainless Steel Construction
- Lightweight
- Short End To End Dimensions
- Complies with AS2845.1, ASSE
- 0.5°C to 43°C



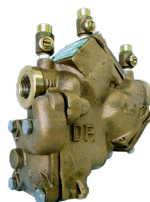
MODEL 2000 SSF DOUBLE CHECK DETECTOR ASSEMBLY

- 65mm-300mm
- Stainless Steel Construction
- Lightweight
- Short End To End Dimensions
- Used on fire lines to detect water usage
- Complies with AS2845.1, ASSE
- 0.5°C to 43°C



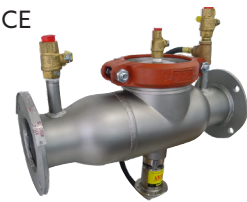
MODEL 909 REDUCED PRESSURE ZONE DEVICE

- 20mm-50mm
- Bronze Body Construction
- Complies with AS2845.1, ASSE
- Suitable for Vertical or Horizontal Installation
- 0.5°C to 60°C continuous, 82°C intermittent
- 909HW 0.5°C to 99°C



MODEL 4000SS REDUCED PRESSURE ZONE DEVICE

- 65mm-300mm
- Stainless Steel Construction
- Lightweight
- Short End to End Dimensions
- Complies with AS2845.1, ASSE
- 0.5°C to 43°C



COLT 200 SERIES DOUBLE CHECK VALVE

- 65mm-300mm
- Closest Competitor is more than 360% Heavier
- Extremely Compact Design
- 300 Series Stainless Steel
- Complies with AS2845.1, ASSE
- 0.5°C to 60°C



COLT 400 SERIES REDUCED PRESSURE ZONE DEVICE

- 65mm-300mm
- Closest Competitor is more than 200% Heavier
- Compact Design
- 300 Series Stainless Steel
- Complies with AS2845.1, ASSE
- 0.5°C to 60°C



AKL 09 415 6151
CHCH 03 341 1048



www.hydroflow.co.nz
orders@hydroflow.co.nz



HIGH HAZARD

Any cross connection hazard which if connected to the potable water supply has the potential to cause death

MEDIUM HAZARD

Any cross connection hazard which if connected to the potable water supply has the potential to injure or endanger health

LOW HAZARD

Any cross connection hazard which if connected to the potable water supply has the potential to cause a nuisance but not injure or endanger health

Table 2: G12 - Dept Building & Housing NZ Building Code Acceptable Solution G12/AS1 Table 2: Selection of Backflow Protection. Available from the Ministry of Business, Innovation and Employment at <https://www.building.govt.nz/>

TYPE OF BACKFLOW PROTECTION	CROSS CONNECTION HAZARD					
	HIGH		MEDIUM		LOW	
	Back-Pressure	Back Siphonage	Back-Pressure	Back-Siphonage	Back-Pressure	Back-Siphonage
Air Gap (see NOTE 1)	✓	✓	✓	✓	✓	✓
Reduced pressure zone device	✓	✓	✓	✓	✓	✓
Double check valve assembly (see NOTE 2)			✓	✓	✓	✓
Pressure type vacuum breaker (see NOTE 3)		✓		✓		✓
Atmospheric vacuum breaker (see NOTE 4)		✓		✓		✓

NOTE

1. Air gaps must not be installed in a toxic environment.
2. Double check valves can be installed in a medium and low hazard toxic environment.
3. Pressure type vacuum breakers are designed to vent at 7kPa or less. However, they require a significantly higher pressure to reseal and must be installed only in systems which provide pressures sufficient to ensure full closing of the valve.
4. Hose vacuum breakers are a specific type of atmospheric vacuum breaker.

HYDROFLOW RECOMMENDS THAT ONLY TESTABLE DEVICES BE USED IN HIGH HAZARD APPLICATIONS

<p>LOW</p>  <p>NO.7 Dual Check Valve</p>	<p>LOW MEDIUM</p>  <p>007 Double Check Valve</p>	<p>LOW MEDIUM</p>  <p>007/709 Double Check Valve</p>	<p>LOW MEDIUM</p>  <p>2000SS Double Check Valve</p>
<p>LOW MEDIUM</p>  <p>COLT 200 Double Check Valve</p>	<p>LOW MEDIUM</p>  <p>2000SSF Double Check Detector</p>	<p>HIGH*</p>  <p>HB Hose Tap Vacuum Breaker</p>	<p>HIGH</p>  <p>288A Atmospheric Vacuum Breaker</p>
<p>HIGH</p>  <p>COLT 400 Reduced Pressure Zone Device</p>	<p>HIGH</p>  <p>009 Reduced Pressure Zone Device</p>	<p>HIGH</p>  <p>009/909 Reduced Pressure Zone Device</p>	<p>HIGH</p>  <p>4000SS Reduced Pressure Zone Device</p>
<p>HIGH</p>  <p>909 Reduced Pressure Zone Device</p>	<p>HIGH</p>  <p>008 Spill Resistant Vacuum Breaker</p>	<p>HIGH</p>  <p>800 Pressure Vacuum Breaker</p>	

* Specifically for use on hose taps only