

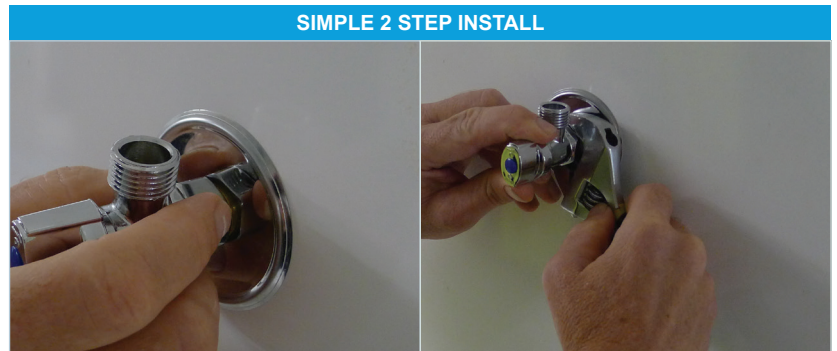
TERMINATOR

INSTALL TO THE RIGHT POSITION FIRST TIME - EVERYTIME!

The innovative design of the rotating nut means the outlet is always in the desired position for ease of connection.

The cone washer seals on the inside of the brass nipple, meaning Teflon Tape or Hemp is not required, minimizing the risk of leakage.

- ✓ Quick to install
- ✓ Rotatable and compact
- ✓ No Teflon tape or Sealant required
- ✓ Great for confined spaces



SIMPLE 2 STEP INSTALL

Align stop outlet to the correct position

Screw on Swivel nut (with cone washer) to the threaded nipple. Then tighten with a wrench.



CISTERN TAP
1/4 TURN

CODE: TMCT15
Cistern Tap

1/2" (15mm) Male

1/2" (15mm)
Female



COMBO DISHWASHER TAP
1/4 TURN

CODE: TMDW1520

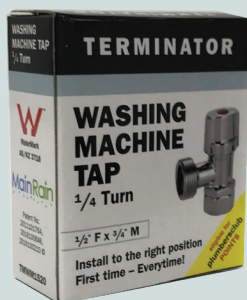
Outlet connection for Dishwasher
and sink mixer

1/2" (15 mm) Male

1/2" (15mm)
Female



3/4" (20mm) Male



WASHING MACHINE TAP
1/4 TURN

CODE: TMWM1520

Dishwasher or Washing Machine

1/2" (15mm)
Female

3/4" (20mm) Male

