

CONNECT + CONTROL



Pegler Yorkshire



**MARKET LEADING METAL
PUSH-FIT SYSTEM**

CONNECT WITH CONFIDENCE

DISTRIBUTED BY

HYDROFLOW
LEADING WITH KNOWLEDGE

Tectite



THE RANGE

Tectite fittings from Pegler Yorkshire makes jointing faster and more cost effective than other jointing methods - a fittings system which simply pushes together in seconds to create a perfect joint, every time.



TECTITE PUSH-FIT BENEFITS

A completely heat - free system offering the following benefits:

- ✚ Improved installation time over traditional methods
- ✚ No naked flames (improved safety)
- ✚ Perfectly clean internal bore (less finishing/cleaning required)
- ✚ No localised annealing from high temperature working
- ✚ System does not need to be "dry" for effective jointing



THE PERFECT SOLUTION ALL ROUND

A heat - free, time saving jointing method which guarantees uncontaminated installation. Ideal for domestic maintenance and refurbishment and new build.

RENOWNED PEGLER YORKSHIRE QUALITY AND RELIABILITY

Tectite products offer the bonus of an enhanced 25 - year warranty. Pegler Yorkshire also operates a Quality Management System for the development, manufacture and supply of fittings, tube, valves and accessories which complies with the requirements of BS EN ISO 9001:2008.

STANDARDS AND APPROVALS

WRAS All Tectite Sprint, Tectite Classic, Tectite Pro and Tectite 316 fittings are listed and comply with the requirements of the United Kingdom Water Regulations/Byelaws (Scotland).

DVGW Tectite Classic and Tectite 316 fittings have been approved by the German approval authority. They comply with DVGW Arbeitsblatt W534, which covers fittings and joints for tubes in potable water installations.

Tectite Classic fittings are also approved by **KIWA** (Dutch certification), **SITAC** (Norway, Sweden and Finland certification) and **CSTB** (French certification). Tectite 316 fittings are also approved by **SVGW** (Swiss certification).



Tectite - PEX barrier pipe is kitemark approved



The Tectite range has been certified by the WRAS and is audited periodically



Applicable Tectite products are DVGW approved for the European market



WM Licence No. 022657



PRODUCT OVERVIEW

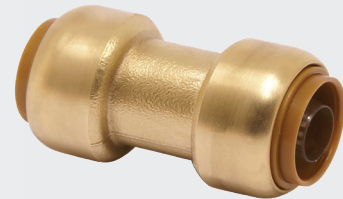
CONNECT + CONTROL

TECTITE

The original Tectite fitting and proven in the field for over 15 years, Tectite can be used for applications where a demountable fitting is required.

FEATURES

- + 12 Bar @ 20° Pex Pipe
- + 3 Bar @ 92° Pex Pipe
- + Temperature 0.5° - 92°C
- + Demountable
- + Available in sizes 16mm to 20mm
- + Manufactured from DZR brass
- + To be used with PEX pipe (with liners).
- + Suitable for use on hot and cold water services
- + WRAS approved
- + AS2537



DESCRIPTION	SIZES (mm)
Straight Coupling	16-20
Reducing Coupling	16-20
Straight Female Connector	16-20
Straight Male Connector	16-20
Elbow	16-20
Male Elbow	16
Female Elbow	16
Backplate Female Elbow	16-20
Large Backplate Male Elbow	16-20

DESCRIPTION	SIZES (mm)
Large Top Plate Male Elbow	16
Equal Tee	16-20
Female Branch Tee	16
Reduced Tee	16-20
Tap Connector Straight	16-20
Stop End	16-20
Ball Valve	16-20

FEATURE	
Size Range	16mm to 20mm
Demountable	✓
Electrical Continuity	-
Applications	Potable Water, Hot Water, Cold Water, Grey/Rain Water, Recycled Water
Tube Compatability	PEX
Material	DZR Brass
Guarantee	25 Year
WRAS	✓



PRODUCT OVERVIEW

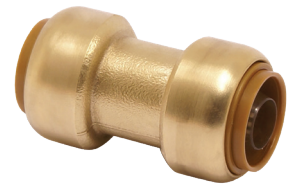
	HYDROFLOW CODE	DESCRIPTION	BOX QTY	BARCODE
	TTC1616P	Straight Coupling 16mm x 16mm (903200)	10	9418171219540
	TTC2020P	Straight Coupling 20mm x 20mm (903202)	5	9418171219557
	TTTC2016P	Reducing Coupling 20mm x 16mm (903224)	10	9418171219496
	TTFC1615P	Straight Female Connector 16mm x 15mm BSP (903225)	10	9418171219236
	TTFC1620P	Straight Female Connector 16mm x 20mm BSP (903230)	10	9418171219564
	TTFC2020P	Straight Female Connector 20mm x 20mm BSP (903231)	5	9418171219571
	TTMC1615P	Straight Male Connector 16mm x 15mm BSP (903229)	10	9418171219588
	TTMC1620P	Straight Male Connector 16mm x 20mm BSP (903232)	10	9418171219595
	TTMC2015P	Straight Male Connector 20mm x 15mm BSP (903234)	10	9418171219601
	TTMC2020P	Straight Male Connector 20mm x 20mm BSP (903233)	10	9418171219618
	TTTC15P	Tap Connector Straight 16mm x 15mm BSP	10	9418171222205
	TTTC20P	Tap Connector Straight 20mm x 20mm BSP	5	9418171222212
	TTE1616P	Elbow 16mm (903201)	10	9418171219298
	TTE2020P	Elbow 20mm (903203)	5	9418171219304






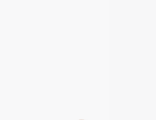
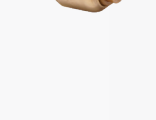



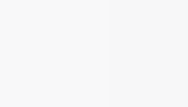
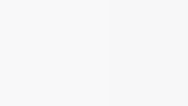
PRODUCT OVERVIEW

CONNECT + CONTROL

HYDROFLOW CODE	DESCRIPTION	BOX QTY	BARCODE
	TTME1615P Male Elbow 16mm x 15mm BSP (903210)	10	9418171219458
	TTFE1615P Female Elbow 16mm x 15mm BSP (903211)	10	9418171219342
	TTMWE1615-75P Large Back Plate Male Elbow 16mm x 15mm BSP - 75mm (903238)	1	9418171219380
	TTMWE1615-100P Large Back Plate Male Elbow 16mm x 15mm BSP - 100mm (903218)	1	9418171219403
	TTMWE1615-185P Large Back Plate Male Elbow 16mm x 15mm BSP - 185mm (903223)	1	9418171219410
	TTMWE2015-100P Large Back Plate Male Elbow 20mm x 15mm BSP - 100mm (903221)	1	9418171219427
	TTMWE2015-200P Large Back Plate Male Elbow 20mm x 15mm BSP - 200mm (903222)	1	9418171219441
	TTMWE2020-200P Large Back Plate Male Elbow 20mm x 20mm BSP - 200mm (903220)	1	9418171219397
	TTMTE1615-100P Large Top Plate Male Elbow 16mm x 15mm BSP - 100mm (903219)	1	9418171219434
	TTFWE1615P Backplate Female Elbow 16mm x 15mm BSP (903204)	5	9418171219267
	TTFWE2020P Backplate Female Elbow 20mm x 20mm BSP (903206)	5	9418171219359



PRODUCT OVERVIEW

HYDROFLOW CODE	DESCRIPTION	BOX QTY	BARCODE
 TTET1616P	Equal Tee 16mm (903205)	5	9418171219311
 TTET2020P	Equal Tee 20mm (903213)	5	9418171219328
 TTFT1615P	Female Branch Tee 16mm x 16mm x 15mm BSP (903212)	5	9418171219335
 TTRT201620P	Reduced Tee 20mm x 16mm x 20mm (903216)	5	9418171219472
 TTRT201616P	Reduced Tee 20mm x 16mm x 16mm (903207)	5	9418171219465
 TTRT202016P	Reduced Tee 20mm x 20mm x 16mm (903214)	5	9418171219489
 TTSE16P	Stop End 16mm (903226)	10	9418171219502
 TTSE20P	Stop End 20mm (903235)	10	9418171219519
 TTBV1616P	Ball Valve 16mm x 16mm (903209)	1	9418171219274
 TTBV2020P	Ball Valve 20mm x 20mm (903215)	1	9418171219281



PEX PIPE

INSTALLATION GUIDE

CONNECT + CONTROL

EXAMINATION

Remove the TECTITE fitting from its packaging and inspect that it is free from any dirt, debris or foreign matter. Ensure the alignment insert is in place. We recommend the fittings are kept in a sealed box until installation occurs.

PREPARATION

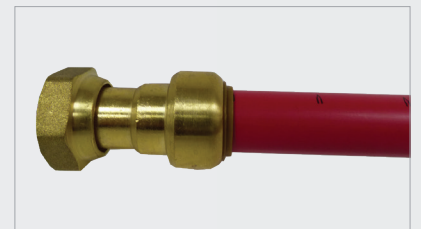
Remove the TECTITE Pex-A pipe from its packaging and inspect for damage ensuring it is free of any scratches and debris. We recommend the TECTITE Pex-A pipe is kept in supplied packaging until installation occurs.

Ensure the TECTITE Pex-A Pipe is cut square on a depth indicator mark to ensure it beds correctly in the fitting.



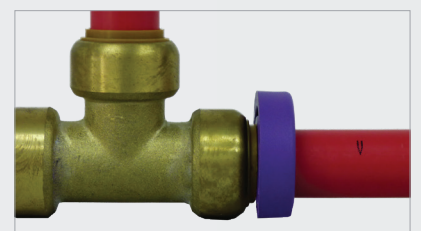
INSTALLATION

Insert the TECTITE Pex-A pipe into the fitting until it rests against the grab ring. Ensure alignment with the alignment insert. Then push the pipe firmly until it rests on the bed of the fitting, the depth indicator marker should be line with the release collar.



DISCONNECTION

Place non-branded face of the TECTITE disconnection clip on the release collar. Push against the collar and pull the pipe with a twisting action to release.



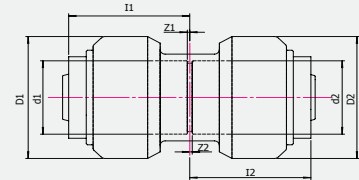
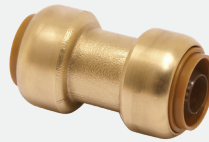
SYSTEM TESTING

The TECTITE system must be installed and tested as per the standards in AS3500. For in-ground installations please check local codes for correct process. Always ensure the fitting is wrapped in a suitably approved product to protect from soil and impurities.



Straight Coupling

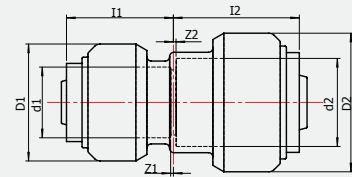
Push-fit Pex x Push-fit Pex



Size	d1	d2	I1	I2	D1	D2	z1	z2	Code
16mm	16	16	25	25	27	27	0.5	0.5	TTC1616P
20mm	20	20	29	29	32	32	0.5	0.5	TTC2020P

Reducing Coupling

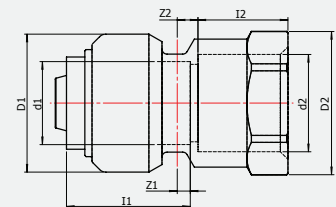
Push-fit Pex x Push-fit Pex



Size	d1	d2	I1	I2	D1	D2	z1	z2	Code
20 x 16mm	16	20	25	29	27	32	0.5	0.5	TTRC2016P

Straight Female Connector

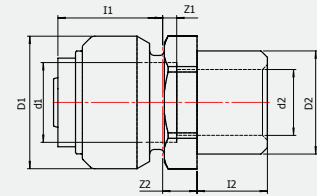
Push-Fit Pex x BSP Female Thread



Size	d1	d2	I1	I2	D1	D2	z1	z2	Code
16mm x 15mm (1/2")	16	G1/2	24	17.5	27	28A/F	2.5	4	TTFC1615P
16mm x 20mm (3/4")	16	G3/4	23	19	27	30A/F	1.5	4	TTFC1620P
20mm x 20mm (3/4")	20	G3/4	24.5	19.5	32	30A/F	4	5	TTFC2020P

Straight Male Connector

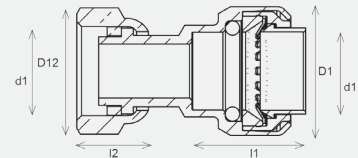
Push-Fit Pex x BSP Male Thread



Size	d1	d2	l1	l2	D1	D2	z1	z2	Code
16mm x 15mm (1/2")	16	13.5	21	14.5	27	R1/2	3	7	TTMC1615P
16mm x 20mm (3/4")	16	15	22.5	16	27	R3/4	2	6.5	TTMC1620P
20mm x 15mm (1/2")	20	19	22.5	15.5	32	R3/4	6	7	TTMC2015P
20mm x 20mm (3/4")	20	13.5	22.5	14.5	32	R1/2	6	8.5	TTMC2020P

Tap Connector Straight

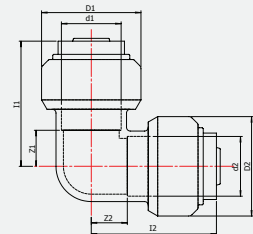
Push-fit Pex x BSP



Size	d1	d2	l1	l2	D1	D2	Code
16mm	16	11.5	32	14	27	24	TTTC15P
20mm	20	15.5	41	15	32	30.5	TTTC20P

Elbow

Push-fit Pex x Push-fit Pex

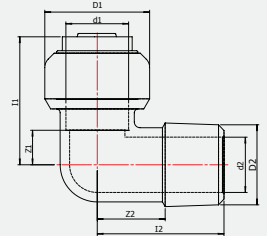


Size	d1	d2	l1	l2	D1	D2	z1	z2	Code
16mm	16	16	34	34	27	27	10	10	TTE1616P
20mm	20	20	39	39	32	32	11	11	TTE2020P



Male Elbow

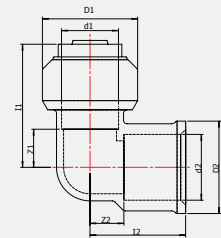
Push-fit Pex x BSP Taper Male Thread



Size	d1	d2	l1	l2	D1	D2	z1	z2	Code
16mm x 1/2"	16	14	33	32.5	27	R1/2	9	17.5	TTME1615P

Female Elbow

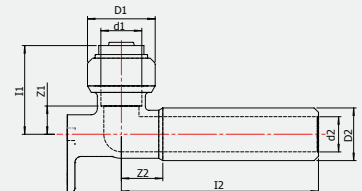
Push-fit Pex x BSP Female Thread



Size	d1	d2	l1	l2	D1	D2	z1	z2	Code
16mm x 1/2" (15mm)	16	G1/2	35	27	27	26	11	9.5	TTFE1615P

Large Backplate Male Elbow

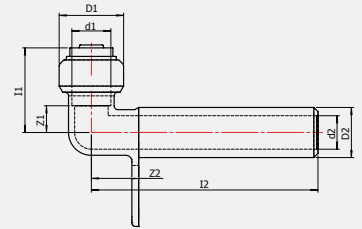
Push-fit Pex x BSP Male Thread



Size	d1	d2	l1	l2	D1	D2	z1	z2	Code
16mm x 1/2" (15mm) - 75mm	16	14	35	53.5	27	G1/2	11.5	16.5	TTMWE1615-75P
16mm x 1/2" (15mm) - 100mm	16	14	35	78.5	27	G1/2	11.5	16.5	TTMWE1615-100P
16mm x 1/2" (15mm) - 185mm	16	14	34	163	27	G1/2	10	16.5	TTMWE1615-185P
20mm x 1/2" (15mm) - 100mm	20	14	40	78	32	G1/2	11.5	16.5	TTMWE2015-100P
20mm x 1/2" (15mm) - 200mm	20	14	40	178	27	G1/2	11.5	16.5	TTMWE2015-200P
20mm x 3/4" (20mm) - 200mm	20	19	40	178	32	G3/4	11.5	16.5	TTMWE2020-200P

Large Top Plate Male Elbow

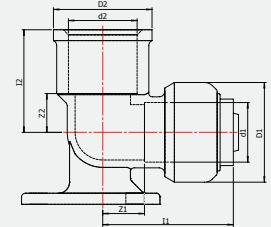
Push-fit Pex x BSP Male Thread



Size	d1	d2	l1	l2	D1	D2	z1	z2	Code
16mm x 1/2" (15mm) -100mm	16	14	35	95	27	G1/2	11.5	20	TTMTE1615-100

Backplate Female Elbow

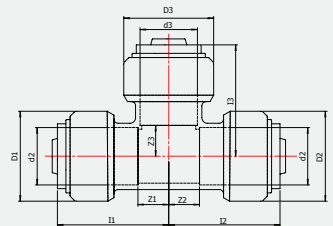
Push-fit Pex x BSP Female Thread



Size	d1	d2	l1	l2	D1	D2	z1	z2	Code
16mm x 1/2" (15mm)	16	G1/2	35	28	27	26.5	11	10.5	TTFWE1615P
20mm x 3/4" (20mm)	20	G3/4	40.5	34	32	33.5	12	15	TTFWE2020P

Equal Tee

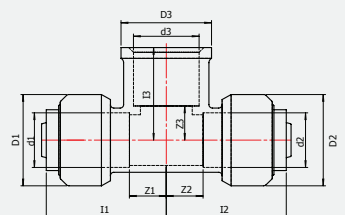
Push-fit Pex on all ends



Size	d1	d2	l1	l2	D1	D2	z1	z2	d3	l3	D3	z3	Code
16mm	16	16	34	34	27	27	10	10	16	34	27	10	TTET1616P
20mm	20	20	39.5	39.5	32	32	11	11	20	39.5	32	11	TTET2020P

Female Branch Tee

Push-fit Pex x BSP Female Thread

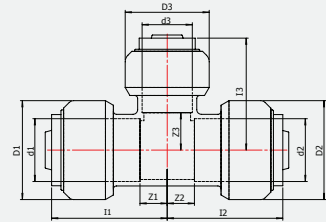


Size	d1	d2	l1	l2	D1	D2	z1	z2	d3	l3	D3	z3	Code
16 x 16 x 1/2" (15mm)	16	16	34.5	34.5	27	27	10.5	10.5	G1/2	27.5	26	10	TTFT1615P



Reduced Tee

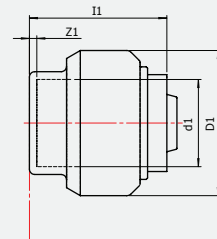
Push-fit Pex on all ends



Size	d1	d2	I1	I2	D1	D2	z1	z2	d3	I3	D3	z3	Code
20 x 20 x 16mm	20	20	37	37	32	32	9	9	16	36	27	12	TTRT202016P
20 x 16 x 20mm	20	16	39	35	32	27	10.5	10.5	20	39	32	10.5	TTRT201620P
20 x 16 x 16mm	20	16	37.5	33	32	27	9	9	16	36	27	12	TTRT201616P

Stop End

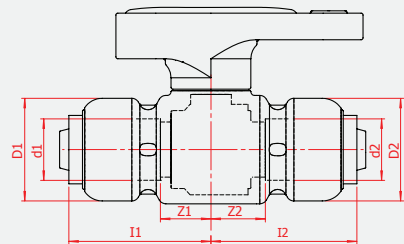
Push-fit Pex ends for use on tube



Size	d1	I1	D1	z1	Code
16mm	16	25.5	27	1.5	TTSE16P
20mm	20	30	32	1.5	TTSE20P

Ball Valve

Push-fit Pex - Push-fit



Size	d1	d2	I1	I2	D1	D2	z1	z2	Code
16 x 16mm	16	16	38	38	27	27	13.5	13.5	TTBV1616P
20 x 20mm	20	20	45	45	32	32	16	16	TTBV2020P



**TECTITE
ACCESSORIES**

CONNECT + CONTROL

Demount Clip



Code	Size	Pack Size
TTDC16P	16mm	5 pack
TTDC20P	20mm	5 pack

Form Bend

For use with PEX pipe



Code	Size	Pack Size
PFB16	16mm	each
PFB20	20mm	each

**Pipe Clip Pex
Black**

For use with PEX pipe



Code	Size	Description	Pack Size
PCB1620M	16/20mm	Masonry	each
PCB1620MTS	16/20mm	M-Tek Screw	each
PCB1620TN	16/20mm	Twist Nail	each

Pipe Cutter

For use with PEX pipe



Code	Size	Pack Size
JGTSR	up to 42mm	each



TECHNICAL DATA

MATERIALS SPECIFICATION AND MANUFACTURING STANDARDS

RECOMMENDED APPLICATIONS

Application	Tectite Classic
Commercial mechanical services	
Chilled	-
Potable	✓
Hot water services	✓
Food	-
Brewery	-
Gas	-
Domestic	
Potable	✓
Gas	-
Hot water services	✓
Cold water services	✓

* Brass adaptors not suitable for chilled water.
† Closed loop.

MATERIALS SPECIFICATION

Component	Tectite
Body	DZR brass
'O' ring	EPDM*
Alignment insert	Glass filled Nylon 6
Cartridge/ Demounting ring	Acetal copolymer
Grab ring	Stainless steel
35-54mm End Cap	-
Shim	-

BNB. The 'O' ring in all Tectite fittings is manufactured from Ethylene Propylene Diene Monomer (EPDM) and is supplied lubricated for easy tube insertion.
* Ethylene Propylene Diene Monomer.



TECHNICAL DATA

WATER PIPE PROPERTIES

CONNECT + CONTROL

- Pex A, PN 20 rated
- Highest flexibility pipe, minimum 82% cross-linking
- Durable at high temperatures High tolerance to wear and corrosion
- Certified as compliant to relevant AS2492-1994 by Approval Mark International
- Watermark WM 022657



Black Pipe

(Pex-A)



Size	Specification	Code
16mm x 5m	PN20	PEX16B5
20mm x 5m	PN20	PEX20B5
16mm x 50m	PN20	PEX16B50
20mm x 50m	PN20	PEX20B50

Red Pipe

(Pex-A)



Size	Specification	Code
16mm x 5m	PN20	PEX16R5
20mm x 5m	PN20	PEX20R5
16mm x 50m	PN20	PEX16R50
20mm x 50m	PN20	PEX20R50

Tectite

HYDROFLOW

LEADING WITH KNOWLEDGE

Follow us on



www.hydroflow.co.nz

