

INSTALL GUIDE & SPECIFICATION SHEET

Aquor[®] Ground Hydrant

IN-GROUND YARD HYDRANT SYSTEM

FLUSH MOUNT | SELF-DRAINING | FREEZE-PROOF





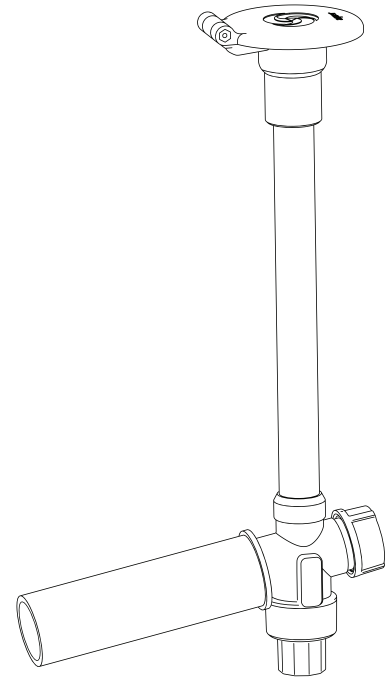
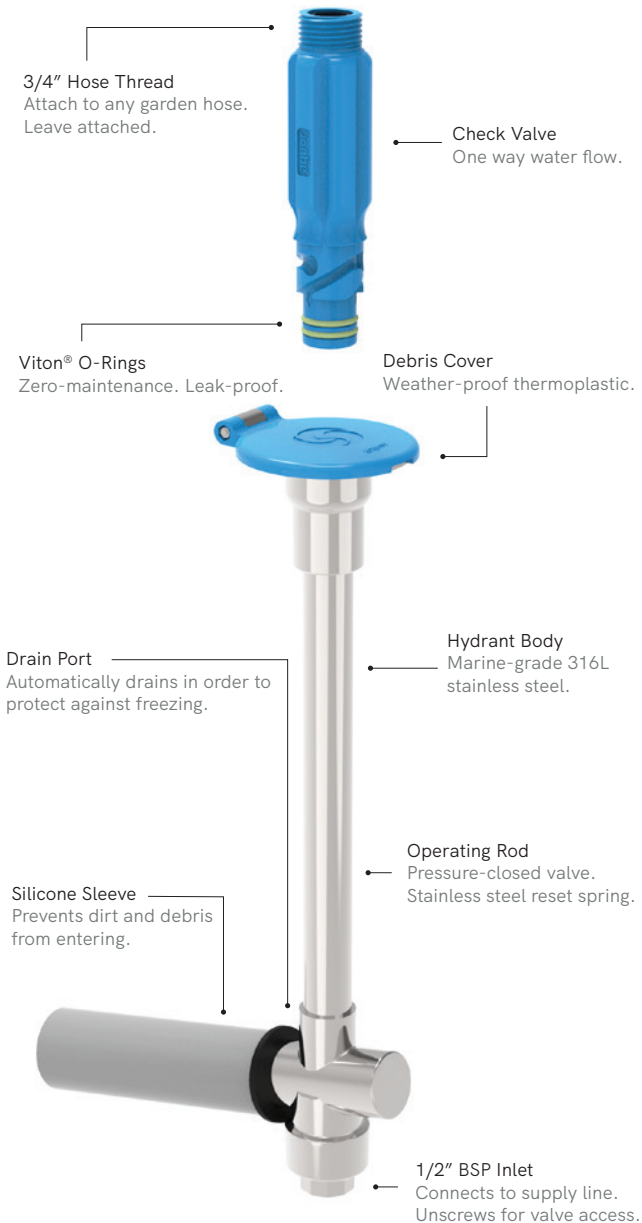
GROUND HYDRANT

The Aquor® Ground Hydrant is a freeze-proof yard hydrant. Easy to install, bury it or install at waist height.

The hydrant will self-drain when disconnecting to protect against freezing and will self-clean so no maintenance is required. Available in gray (or blue upon request).

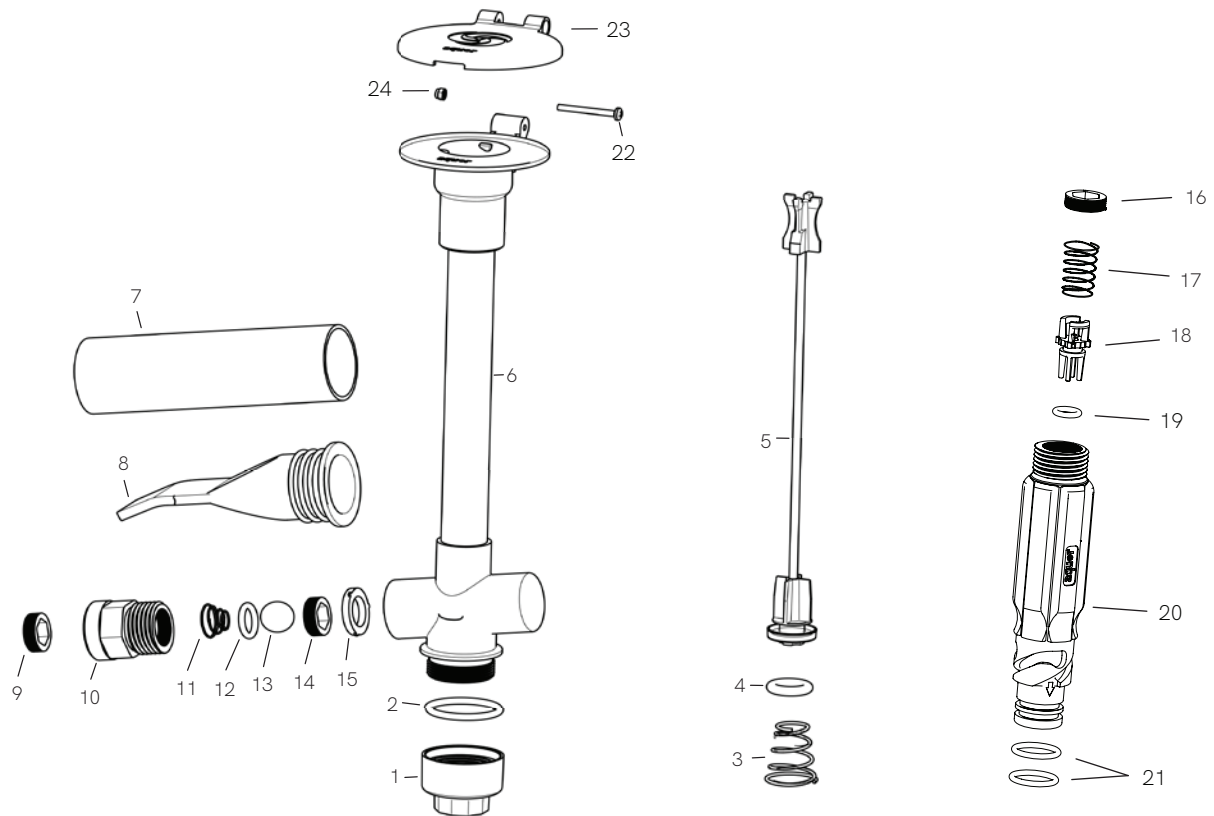
FEATURES & BENEFITS

- Flush-mounted design with twist lock connection system.
- Easy to install at any height, recessed, flush with the ground, or waist level.
- 100% frost-free, leak-free, and lead-free.
- Instant access under full water pressure.
- Hydrants self-drain providing complete freeze protection all winter long.
- High quality marine-grade 316L stainless steel and Delrin® acetal resin are durable and long-lasting.
- Hose connector contains integral check valve for backflow protection.
- Self-cleaning outlet requires no regular maintenance.
- Protects against water theft.



TECHNICAL SPECS

Inlet	1/2 " BSP
Outlet	3/4" BSP
Weight	1.36kg
Operating Temperature	0-60 °C
Operating Water Pressure	172-861 kPa
Hydrant Material	Stainless Steel
Connector Material	Acetal Resin
Cover Material	ASA Thermoplastic
O-Ring Material	Fluorocarbon Rubber
Warranty	10YR Stainless, 5YR Polymer
SKU	UGH-SERIES



HYDRANT

- | | |
|-------------------------------|--------------------------------|
| 1. Rear Valve Housing (inlet) | 9. Check Valve Retainer |
| 2. Hydrant Body O-Ring | 10. Check Valve Housing |
| 3. Valve Spring | 11. Check Valve Release Spring |
| 4. Inner Valve O-Ring | 12. Check Valve O-Ring |
| 5. Operating Rod | 13. Check Valve |
| 6. Hydrant Body | 14. Check Valve Screen |
| 7. PVC Protective Sleeve | 15. Check Valve Housing Washer |
| 8. Silicone Flapper Valve | |

HOSE CONNECTOR

- | |
|---------------------------|
| 16. Check Valve Retainer |
| 17. Check Valve Spring |
| 18. Connector Check Valve |
| 19. Check Valve O-Ring |
| 20. Connector Body |
| 21. Connector O-Rings |

DEBRIS COVER

- | |
|-----------------------|
| 22. Debris Cover Bolt |
| 23. Debris Cover |
| 24. Debris Cover Nut |

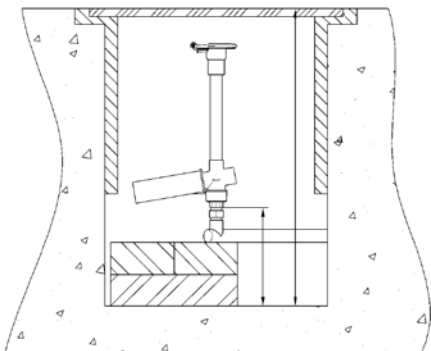
INSTALLATION

Before installation, decide on a location for the hydrant and be sure to decide how deep you want the hydrant.

1. DIG A HOLE

Dig a hole for the hydrant approximately 600mm in diameter and 300mm deeper than the bury depth. For additional protection and/or concealment, you can install an in-ground valve box or pull box to surround the hydrant.

Note: The valve at the bottom of the hydrant must be buried below the frost line. This ensures proper drainage so the hydrant does not freeze.

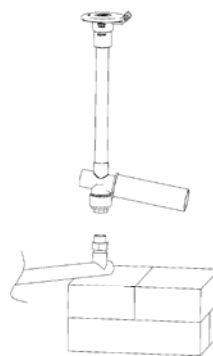


2. FLUSH THE PIPES

Flush the piping in your water supply before connecting the hydrant to clear any debris that may have collected during the installation and assembly. Debris in the water supply can cause a jam in the hydrant's closing mechanism.

3. CONNECT THE HYDRANT

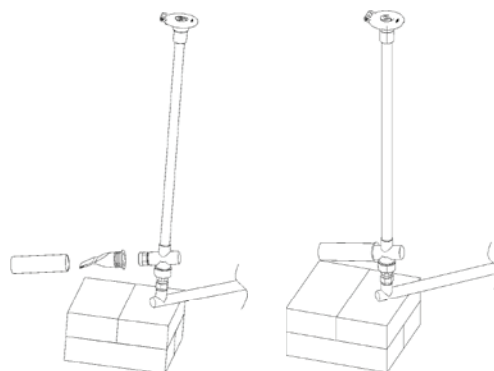
Connect the hydrant to the water supply, but do not bury the hydrant yet. Place the hydrant on top of a cinder block or other heavy, flat object for support to prevent damage to the supply line and the hydrant.



Note: Make sure to connect a garden hose to the Aquor® hose connector BEFORE connecting the hydrant. Water will start flowing instantly.

4. TURN ON THE WATER

Turn on the water supply and test the hydrant to ensure it is operating correctly. Attach the included Aquor® hose connector to a garden hose, then plug into the hydrant.

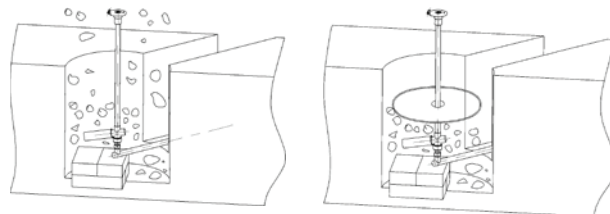


5. CHECK THE VALVE

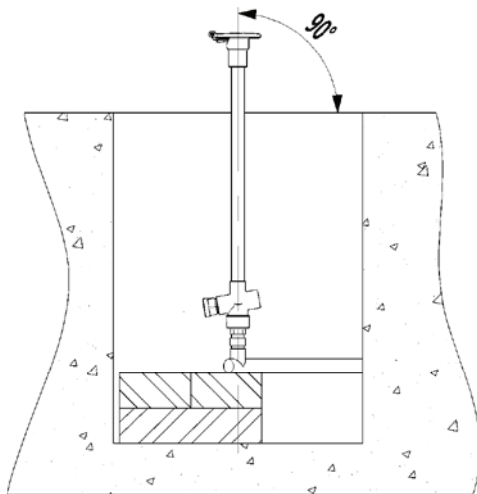
Check to make sure the hydrant's drainage valve is clear of obstruction. The silicone flapper valve is designed to drain excess water while preventing bugs and debris from entering the valve. The PVC sleeve protects the silicone flapper valve from damage.

Ensure the hydrant drains properly before burying.

Ensure the hydrant is installed level, perpendicular to the ground surface.



Optional: Layer a suitable plastic sheeting or landscaping fabric halfway through filling. This can help prevent soil or fine sand from settling and filling the drain field.

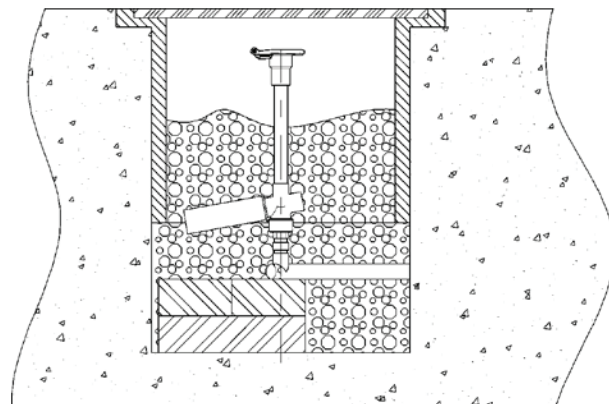


6. FILL THE HOLE

Fill the hole around and below the hydrant with medium-size gravel or drain rock. This provides a drain field for the hydrant. Without a proper drain field, the hydrant may not empty itself, and will be susceptible to freezing.

7. TEST THE HYDRANT

Test hydrant operation again to ensure everything is installed properly and functioning correctly.

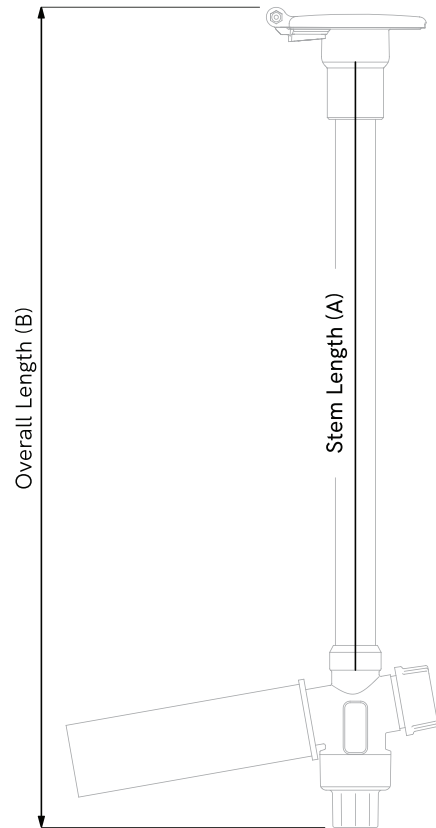
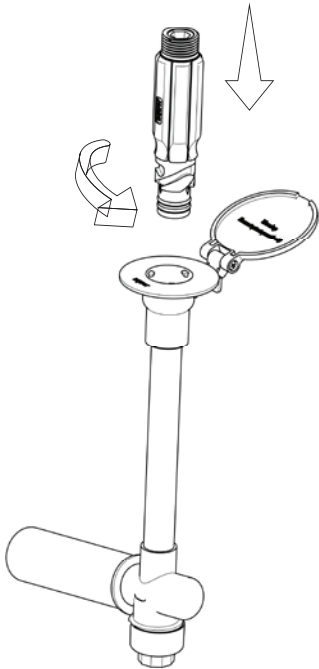


OPERATION

Firmly attach the Aquor® connector to a garden hose, using teflon tape if needed.

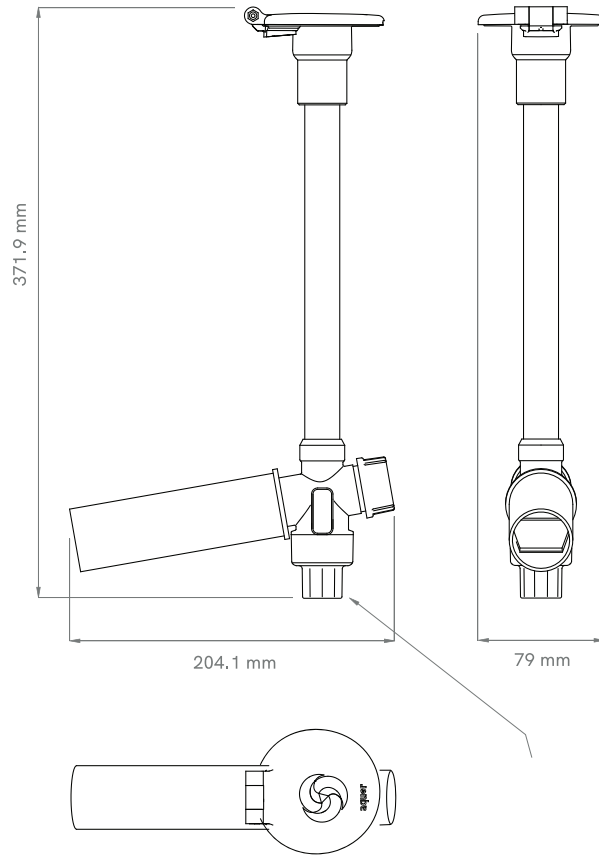
Connect: To connect to the hydrant, line up the 3 grooves on the connector then simultaneously push and twist clockwise into the outlet. Position your wrist as if you are about to wring out a towel, and complete the action in one smooth motion. Water flow will start instantly.

Disconnect: Perform the reverse motion to disconnect. Water will shut off instantly, and self-drain through the drain port.



SKU	Stem Length (A)	Overall Length (B)
UGH12	12" Hydrant	358 mm
UGH18	18" Hydrant	508 mm
UGH24	24" Hydrant	662 mm
UGH36	36" Hydrant	966 mm
UGH48	48" Hydrant	1271 mm

AQUUGH12-G
12" Ground Hydrant





Aquor Water Systems Inc.
www.aquorwatersystems.com
240 Airport Rd, Port Townsend, WA 98368
sales@aquorwatersystems.com
P: 1-800-458-1749