

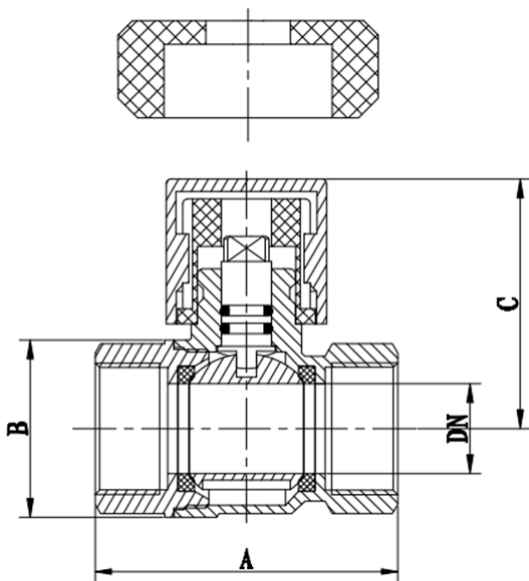
## DL1145 Female/Female Brass Ball Valve with Lockable Handle

### Technical Details

- Working Pressure 16bar (232 psi)
- Thread ISO228 (equivalent to DIN 259 and BS2779)
- Working Temperature from -10° to +120°
- Opening/closing Test 10,000 times

### Details

- Brass Valve Body: High-density forging, no blister, no air holes, no leakages. Made by special high precision CNC machines.
- Brass Bonnet: High-density forging, no blister, no air holes, no leakages. Made by special high precision CNC machines.
- Valve Ball: Smooth and wear resisting, with good sealing performance.
- Brass Valve Stem: Made of hot rolled brass, high tensile strength, long-term use without deformation, fracture.
- Ball Seat: Made by pure PTFE (polytetrafluoroethylene), with high elasticity and wear resistance.
- Handle: The handle can be made of zinc alloy or plastic, corresponding to copper lock and plastic lock respectively.
- O-ring: NBR & FKM, made of imported raw material, small friction coefficient, long service life.



No.	Part	Materials	Dimension mm	1/2"	3/4"	1"
1	Body	Brass				
2	Bonnet	Brass	A	52	60.4	67.6
3	Ball	Brass	B	29	35.5	43
4	Seal	PTFE	C	48	52	56
5	Stem	Brass	DN	13	18	23
6	O ring	NBR	PN	16	16	16
7	O ring	Fluorocarbon				
8	Handle	Zinc Alloy/Plastic				
9	Key	Brass/Plastic				

- Female X Female 16 Bar Brass Ball Valve with Lockable Handle.
- The thread, colour of handle, materials, etc. can be customized.
- The handle can be made of zinc alloy or plastic, corresponding to copper lock and plastic lock respectively.

NOTE: Ball valves with red handle can be only used in water services, heating and air conditioning plants, and compression air system. They are not allowed to be used in gas system.



AKL 09 415 6151  
CHCH 03 341 1048



www.hydroflow.co.nz  
orders@hydroflow.co.nz

