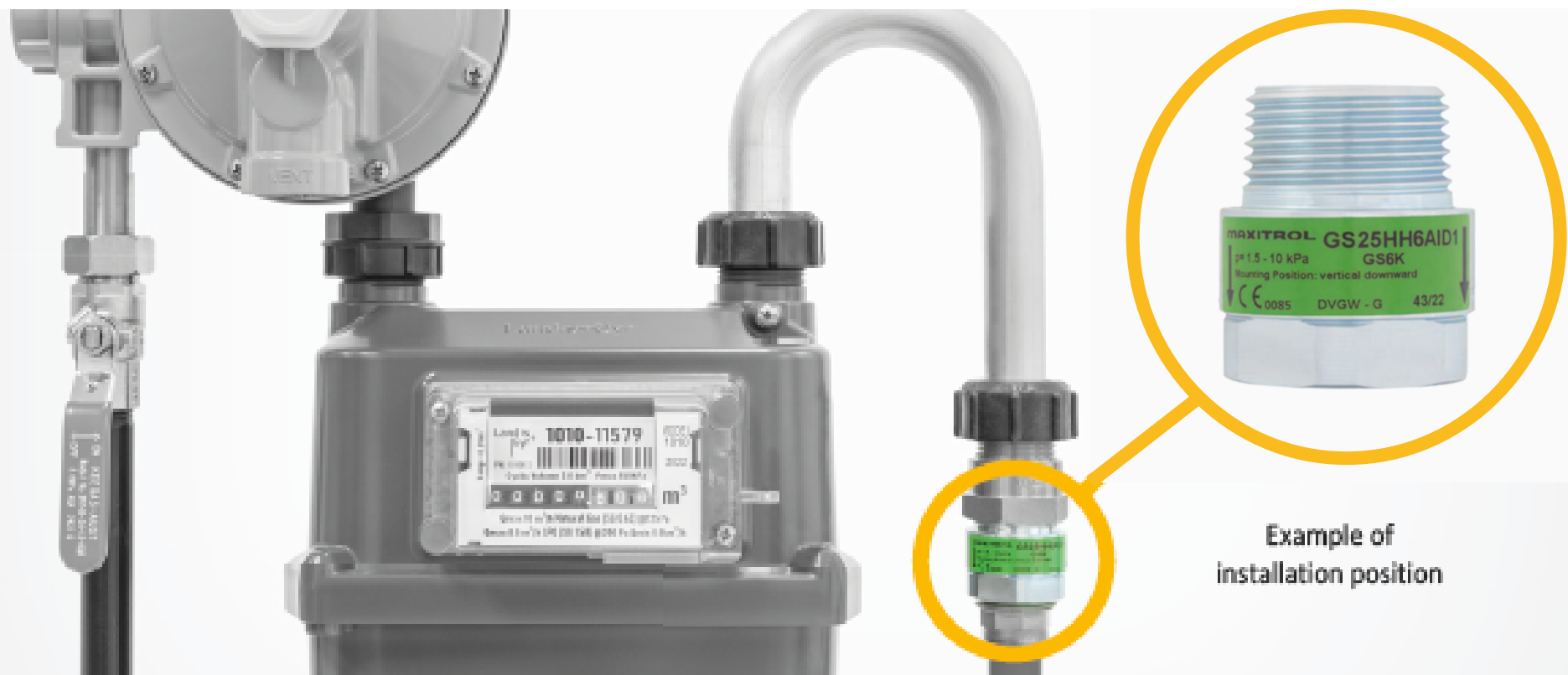


# Maxitrol Excess Flow Valve

## Residential Gas Flow Control



## Ensuring Reliable Gas Flow Control

The Maxitrol Excess Flow Valve brings a reliable solution to residential gas flow control, with precise adjustment and compliance with new installation codes.

A stable open position, tested operating pressure range, and patented damper function, these valves offer homeowners peace of mind and enhance safety in gas installations.



Pressure Range  
1.25-10kPa



Compliant with  
NEW standard



Sizes  
20mm to 40mm

## Features

- Complies with the new AS/NZS5601.1 (Clause 5.2.11)
- Size range 20mm to 40mm
- Tested operating pressure range 1.25-10kPa
- Nominal flow from 1.6m<sup>3</sup>/h natural gas to 16m<sup>3</sup>/h



AKL 09 415 6151  
CHCH 03 341 1048



[www.hydroflow.co.nz](http://www.hydroflow.co.nz)  
[orders@hydroflow.co.nz](mailto:orders@hydroflow.co.nz)



