

Code Description Size

## RNK-RP-N

### VOLUMETRIC ROTARY-PISTON METER FOR COLD POTABLE WATER WITH PROTECTED DIAL AND BRASS BODY

RNK-RP volumetric piston meters with protected dial are used world wide, with its proven combination of highly precise measuring insert and rugged casing they perform perfectly the measurement of potable water. A very low starting flow and reliable performance are its main features.

The protected roller register is easily readable even under demanding climatic conditions.

The construction principle of the RNK-RP-N with direct transmission from the measuring chamber to the register ensures protection against magnetic or other manipulation attempts of interference.

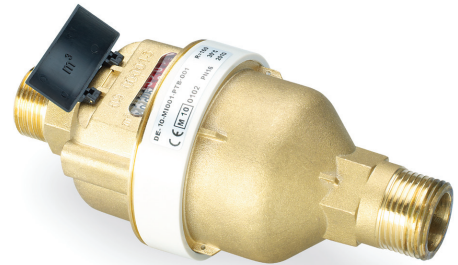
The filter and integrated check valves ensure additional backflow prevention.

Performance characteristics in overview

- Counter with protected rollers
- Body made from high-quality brass
- Operating pressure PN16
- Display range 0.02 l to 9.999 m<sup>3</sup>
- Proven accuracy in any installation position
- With integrated tamper proof check valve
- Other versions and lengths of volumetric meters up to DN 40 available on request
- According to ISO 4064 and MID 2014/32/EU

Applications

- For the consumption measuring of cold potable water up to 50 °C



### VOLUMETRIC METERS DZR BRASS BODIED VOLUMETRIC

WMZVRP15	15mm	Cold UBA R160 0.5L/imp (122650 RNK-RP-N)
WMZVRP20	20mm	Cold UBA R160 0.5L/imp (122156 RNK-RP-N)

### STANDARD BRASS BODIED VOLUMETRIC

WMZVRP25	25mm	Cold R160 0.5L/imp (141063 RNK-RP-N)
WMZVRP32	32mm	Cold R160 0.5L/imp (141064 RNK-RP-N)
WMZVRP40	40mm	Cold R160 5L/imp (141065 RNK-RP-N)

### REED SWITCHES

WMZVRP-N	Reed Switch/Pulse for Volumetric Meters 15- (134908)
WMZVRPK-N	Reed Switch/Pulse for Volumetric Meters 25- (146172)