

Flexseal Puddles Flanges

- Easy to install
- A cost effective solution
- Can be installed in walls, floors and ceilings
- Good general chemical resistance



Flexseal Puddle Flanges are used to seal around the outside of pipes that are required to pass through concrete structures, such as tanks, manhole chambers, shafts, floor slabs and basements and are installed during construction.

Protection against water leakage

Pipes passing through concrete will not bond to the concrete and water can pass along the external surface of the pipe. Flexseal Puddle Flanges act as a barrier to this flow, preventing water penetration. The seal is clamped onto the pipe and stops this direct route. The rubber body is compressed during the concrete pouring process, should the concrete shrink when curing the rubber will relax, maintaining a watertight seal between the concrete structure and pipe.

* Fabricated Puddle Flanges are manufactured to site requirements using extruded strip and vulcanized joints.

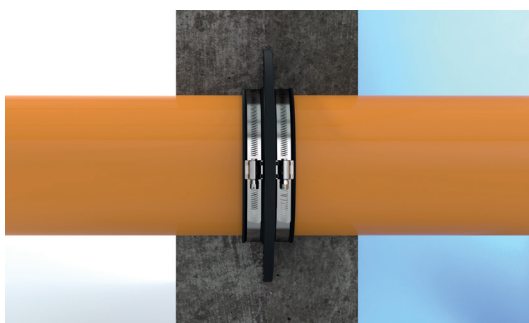
Protection against radon gases

Radon is a colourless, odourless radioactive gas. It is formed by the radioactive decay of the small amounts of uranium that occur naturally in all rocks and soils.

Radioactive elements decay and emit radiation. Any exposure to this type of radiation is a risk to health – radiation is a form of energy and can cause damage in living tissues increasing the risk of cancer.

– Public Health England

Studies have found that high level of radon can build up in living spaces if badly ventilated and therefore it's important to use radon barriers to reduce the amount of radon emitted into homes/building. Puddle Flanges can be used to reduce the risk of radon gases emitting via gaps on the outside of pipes.



Fit horizontally or vertically

for above or below ground applications

Strong stainless steel clamp bands



High quality EPDM coupling body

Product Code	PFXXXX
Description	Flexseal Puddle Flanges
Size Range	15-341
Material	EPDM Rubber 1.4401 (316) Stainless Steel <i>Couplings with a different material makeup are available on request.</i>
Pressure Rating	Moulded Puddle Flanges are watertight to 10bar Fabricated Puddle Flanges are watertight to 5bar
Temperature Range	EPDM Puddle Flange = -50°C to 80°C constant, 100°C intermittent Nitrile Puddle Flange = -20°C to 45°C Maximum
Tightening Torque	6Nm / 13Nm (Torque displayed on product label)

Moulded at these sizes		
Product Code	Product Ref	Size Range (mm)
PF015-025	FRK9602A	15-25
PF026-035	FRK9603A	26-35
PF036-044	FRK9404A	36-44
PF045-056	FRK9605A	45-56
PF057-071	FRK9606A	57-71
PF072-084	FRK9607A	72-84
PF085-101	FRK9609A	85-101
PF102-121	FRK9611A	102-121
PF122-138	FRK9612A	122-138
PF139-155	FRK9614A	139-155
PF156-176	FRK9616A	156-176
PF177-190	FRK9618A	177-190
PF191-212	FRK9420A	191-212
PF213-237	FRK9422A	213-237
PF245-270	FRK9425A	245-270
PF273-300	FRK9426A	273-300
PF304-341	FRK9431A	304-341

Note: Puddle Flanges are moulded smaller than the maximum pipe size, so in some cases will need to be stretched onto the pipe.

Fabricated to bespoke sizes			
Product Code	Product Ref	Min. Pipe Size (mm)	Max. Pipe Size (mm)
PF300	FRK9503	300	399
PF400	FRK9504	400	499
PF500	FRK9505	500	599
PF600	FRK9506	600	699
PF700	FRK9507	700	799
PF800	FRK9508	800	899
PF900	FRK9509	900	999
PF1000	FRK9510	1000	1099
PF1100	FRK9511	1100	1199
PF1200	FRK9512	1200	1299

Note: All fabricated Puddle Flanges are specially made to measure. Upon ordering please quote the outside diameter of the pipe in mm.

Notes:

- Fitted Puddle Flanges have an outside diameter 100/110mm larger than the pipe onto which they are installed (dependent on size).
- Puddle Flanges are, in some cases, supplied with the inside diameter of the seal smaller than the pipe outside diameter and may have to be stretched over the pipe during installation. Pipe Lubricant should be used and can be supplied with your order.
- Puddle Flanges do not provide axial restraint so they should not be used when axial loading on the pipe is present. The pipe has to be fully supported to withstand the concrete pouring process.
- Concrete cover should be 50mm against every surface around the Puddle Flange. Waterproof concrete should be used.

General Information

Quality, Standards and Approvals

Certified by the British Standards Institution (BSI) as a company of assessed capability, with a quality management system which meets the requirements of BS EN ISO 9001:2015

Fernco are the leaders in wastewater connection innovation; utilising the most advanced methods and techniques for precision-manufactured products, all of which comply with or exceed relevant British and European standards to ensure reliability and sustainability.

Environment

Operating Environmental Management Systems which are certified to ISO 14001: 2015.

Supply

All Fernco products are supplied through a national and global network of distribution and merchant partners. For stockist details, contact Fernco.

Technical Support

Fernco have a team of product experts on hand to support all customers with technical support and advice.

Contact Flexseal Technical Department:

Tel: +61 (0) 2 9450 0766

Email: technical@fernco.com.au

Enquiries

Sales:

Tel: +61 (0) 2 9450 0766

Email: sales@fernco.com.au