



**DWW** installation  
**SOLUTIONS**

**Magic Vent**® Air Admittance Valve.  
Reduce outdoor venting associated with  
drain waste systems.

Code compliant  
AAV venting, eliminates multiple  
DWW vent stack roof  
penetrations.

- **Magic Vent** is architect & contractor friendly
- Easily installs under sinks, inside wall cavities and in attic spaces
- Reduces the need for addition piping to the outdoors
- Optional adapter can be solvent welded to either 1 ½" or 2" PVC or ABS drain pipe
- Threaded screw on application allows removal for maintenance
- Fully code compliant
- 100% Pressure tested
- Limited Lifetime Warranty



**MagicVent**®



# MagicVent®

AIR ADMITTANCE VALVES

Superior seal. Quiet operation.



Installs under sink,  
between wall cavities  
or in attic space.

▲  
Magic Vent  
installation using  
Magic Trap  
fitting kit.



# Greater architectural & construction flexibility.



Residential & Commercial Systems



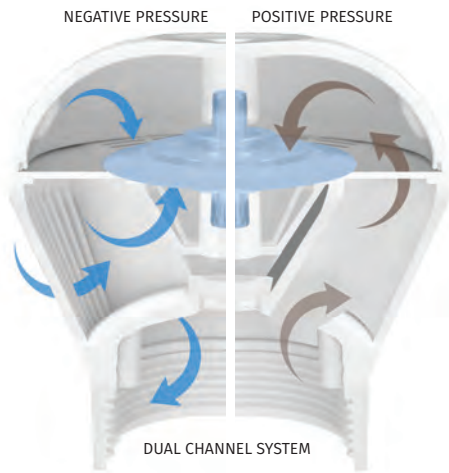
Eliminates loop venting



Contemporary Architecture



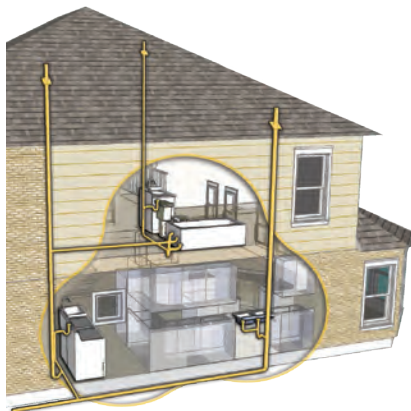
## DUAL CHANNEL MAGIC VENT DESIGN



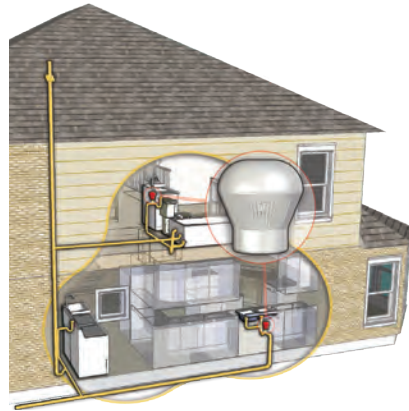
The main purpose of the venting system in a drain, waste, and vent line is to protect the trap seal from siphonage caused by negative pressure in the system and to prevent leakage of sewer gas. Usually, this is done with numerous vent stacks penetrating the roof of a structure. The Magic Vent *Dual Channel* design and Superior Seal performs this function without the need for additional piping to the outdoors. When there is negative pressure in the system, they open to admit air, balance the pressure, and then return to a closed state. In positive pressure situations, they close even more tightly preventing escape of sewer gas.



## CODE AND STANDARD APPROVALS



Traditional vented DWV System



Magic Vent vented DWV System

Magic Vent® AAV's comply with ASSE Performance Standard for Fixture, Branch and stack Air Admittance Valves, conforming to ANSI/ASSE 1051. Listed by ASSE. Tested and complies with NSF/ANSI 14.

Permitted for use in accordance with International Plumbing Code 2006, Section 917, International Residential Code 2006,

Manufactured Housing Construction and Safety Standard 1998 and all current versions of SBCCI - Standard Plumbing Code and BOCA - National Plumbing Code.

# Magic Vent®

## Air Admittance valves



Code	Description	Qty.
97400	Magic Vent	12
97405	Magic Vent & PVC Adapter	12
97406	Magic Vent & ABS Adapter	12
97402	Magic Trap Kit	12



### FEATURES

- Eliminates roof penetrations
- Great design flexibility
- Saves time and money
- Permitted for use in accordance with: IPC 2012, Sec 917; IRC 2012; Manufactured Housing Construction and Safety Standard 2001

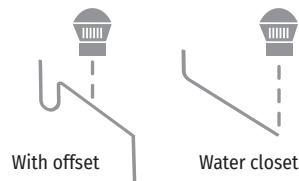
**APPLICATION** • Performs the function of a DWV system vent stack, protecting the trap seal from siphonage without the need for additional piping to the outdoors. Pest and insect resistant.

Models available with PVC or ABS adapter. Adapter bottom accommodates 1½" & 2" drain pipe for solvent welding. Top threads directly into Magic Vent

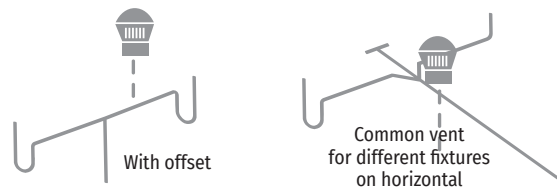


## Installations Using Magic Vent® AAV

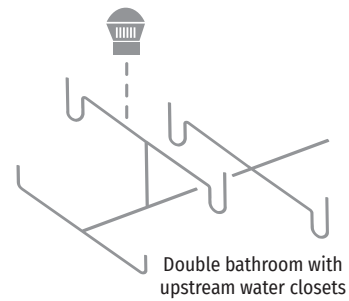
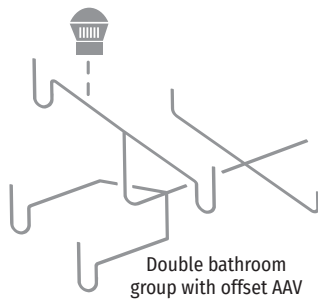
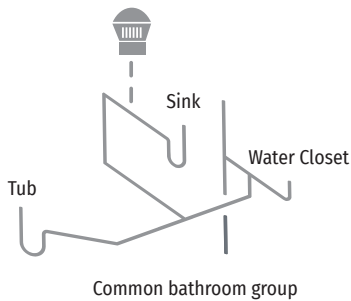
### Individual Vent



### Common Vent



### Wet Vent Insulation



### Circuit Venting

