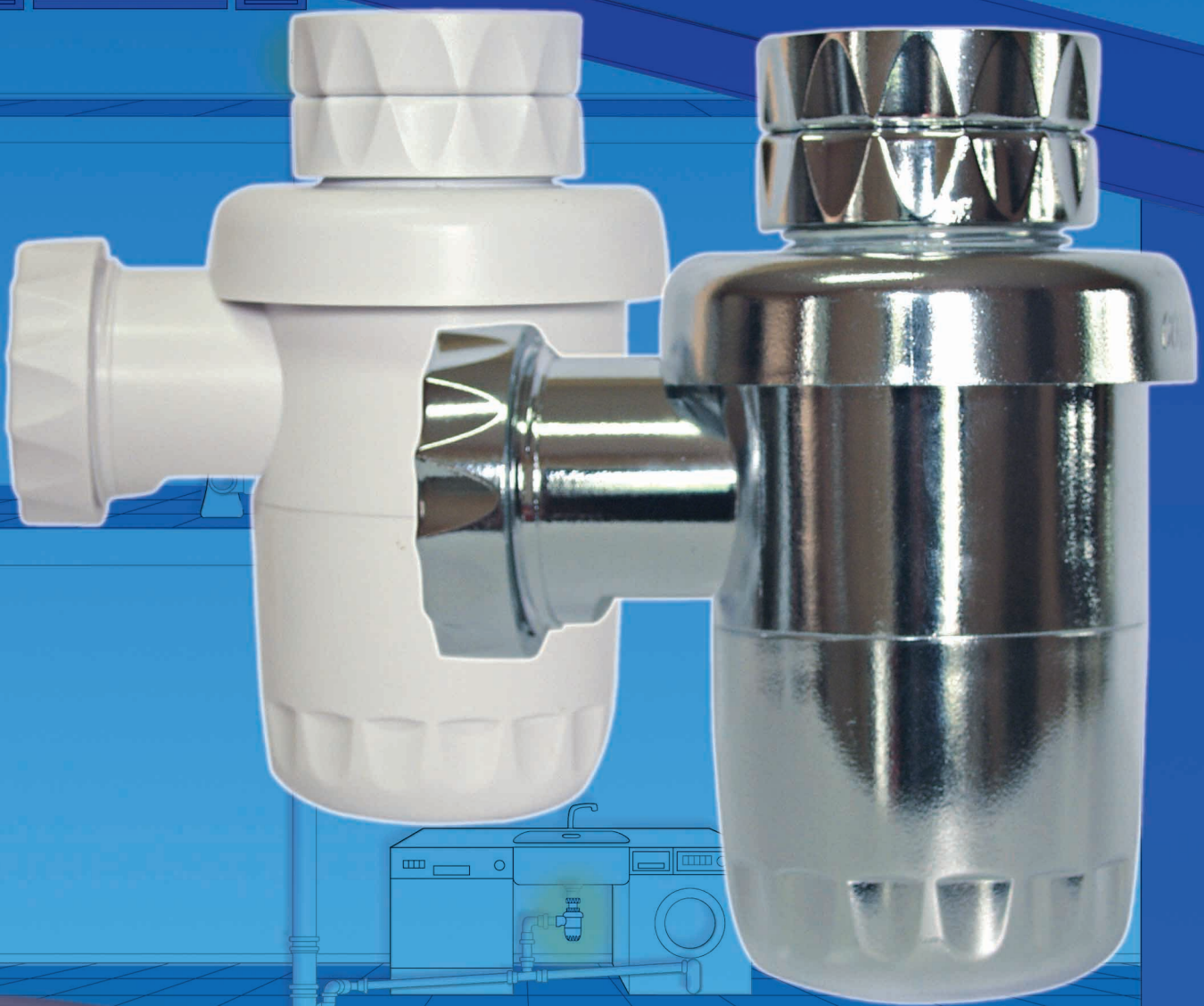


# STUDOR® COMBI-SIPHON<sup>Plus</sup>™

Combined Air Admittance Valve  
and trap for plumbing ventilation



  
**STUDOR**®  
INVENTIVE TECHNOLOGY



# STUDOR® COMBI-SIPHON™ *Plus*

Reduce the need for extensive vent piping with the **STUDOR® Plus Combi-Siphon**

The unique design of the **STUDOR® Air Admittance Valves (AAVs)** provides plumbing ventilation to prevent the loss of water trap seals without the need for costly roof or surface penetrations and vent piping.

## The Product

The compact **STUDOR® Combi-Siphon Plus** is a combined trap with a 50mm seal and an integral AAV, reducing the need for secondary ventilating and replacing conventional S and P traps. Ideal for group venting and problem solving in existing buildings, the **Combi-Siphon Plus** results in great savings by reducing the need for excessive venting piping and greatly improves the performance of the drainage system. Available in white ABS and polished chrome-plate finish, the **Combi-Siphon Plus** is part of the **STUDOR® System** which can vent an entire building without the need for conventional vents.



**Air flow capacity:**  
1.5 litres/second  
**Temperature operating range:**  
0°C to +60°C

## The Advantages

The **STUDOR® Combi-Siphon Plus** is designed for the terminal of individual and branch vents, eliminating floor and roof penetrations.

The **STUDOR® Combi-Siphon Plus**:

- **Replaces extensive vent piping**, saving costs in material and installation.
- **Reduces the need for fire stopping devices** preventing the "chimney effect" in pipes, reducing the risk of fire spreading upwards between floors.
- **Provides greater freedom of design** for engineers, architects and design professionals.
- **Eliminates the risk of water leakages** through unnecessary roof and surface penetrations.
- **Prevents transmission of odorous sewer gas** into the building or surrounding areas.
- **Has a compact design**, which enables installation where space is restricted.
- **Is simply maintained** - the base simply screws off.
- **Is easily installed** - no specialist skills required.
- **Has a lifetime warranty** - equivalent to that of the drainage system in which it is installed - repeated opening and closing will not affect its sealing operation.

## The Installation

The **STUDOR® Combi-Siphon Plus** may be installed up to 1000mm below the flood level of the appliance. It must be installed in a vertical position in an accessible location which permits free movement of air into the valve. Available with 32mm or 40mm appliance connections, no specialist installation is required.

## Our Credentials

**STUDOR®** is the world-leader in plumbing drainage venting technology. With over thirty years of experience, our unrivalled knowledge and expertise continues to ensure that the **STUDOR®** products meet the most rigorous of requirements. Our products are used extensively internationally – including within many of the world's most famous buildings and construction projects already completed and those currently in progress.

  
**STUDOR®**  
INVENTIVE TECHNOLOGY

**STUDOR AUSTRALIA PTY LTD**  
P.O. Box 50, Alexandria NSW 1435,  
Unit 20, Green Square Business Centre,  
36 O'Riordan Street, Alexandria NSW 2015  
Tel: (02) 9698 7445 Fax: (02) 9698 3012  
Mobile: 0410 596337 / 0407 855458 email: australia@studor.net  
[www.studor.net](http://www.studor.net)



AS/NZS 4936  
LN/W20029

0072AU-0002

