



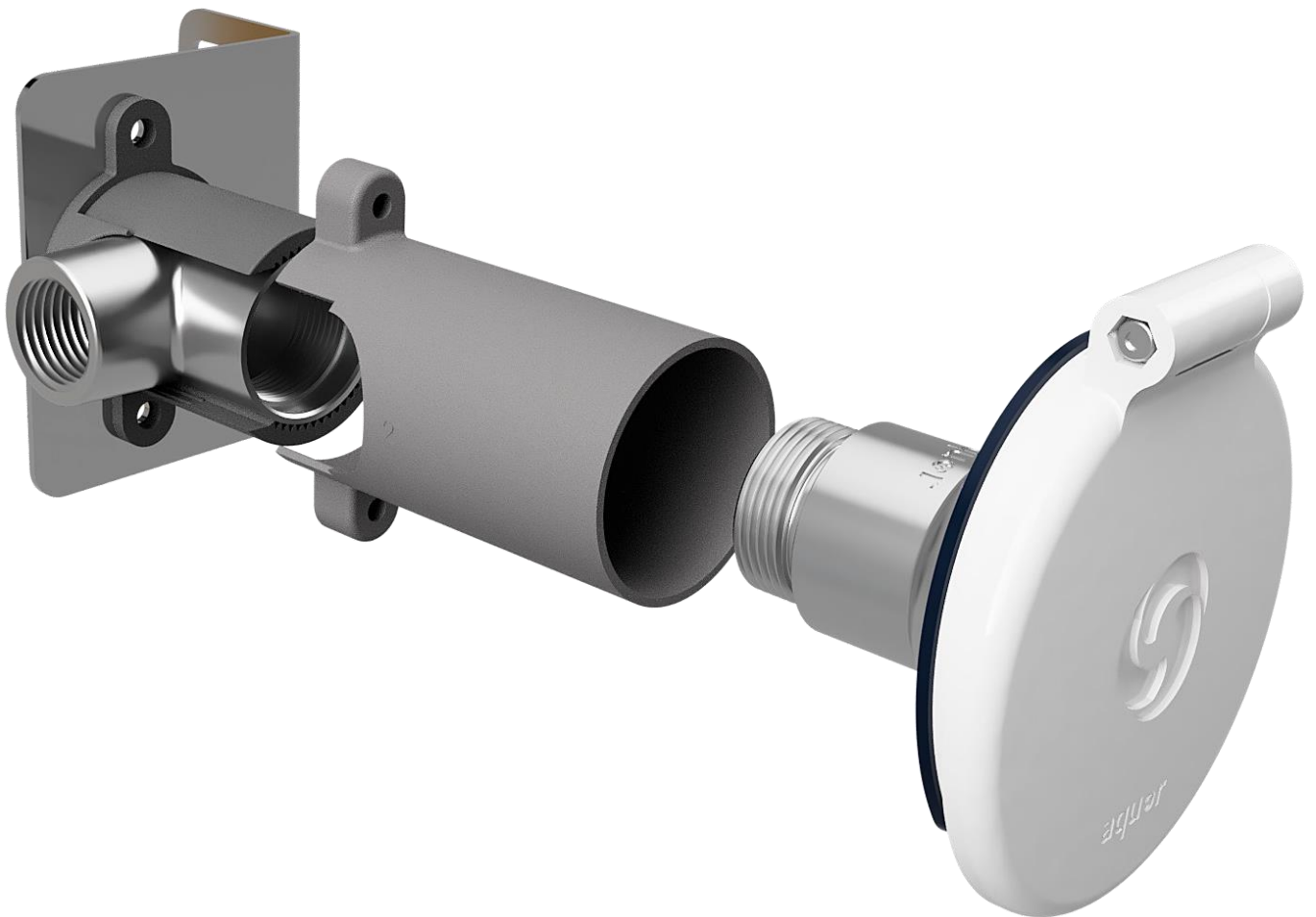
# House Hydrant V1+NZ

FLUSH MOUNT

QUICK CONNECT

ANTI-SIPHON

ANTI-FREEZE



## Specification and Installation Guide New Zealand

Distributed in New Zealand by:

**HYDROFLOW**  
[www.hydroflow.co.nz](http://www.hydroflow.co.nz)

## Introduction

---

The Aquor House Hydrant V1+NZ is a flush mounted, quick connect, exterior water supply system, which when connected to a household pressure water system, provides an always ready connection for external hoses and water reticulation. The Aquor Hydrant is a precision cast stainless steel fitting with long lasting high quality “O” ring valves rather than traditional tap washers. The Aquor Hydrant is specially designed for easy installation by plumbing professionals and specifically designed to meet the requirements of the New Zealand Building Code.

## Intended Use

---

The Aquor Hydrant is intended for use in pressurized water supply systems, in residential and commercial buildings, for external water delivery. It is suitable for potable water supply and, where back-flow protection is required, hose attachments must have a New Zealand compliant vacuum breaker attached.

## Conditions and Limitations

---

The Aquor Hydrant must be installed in strict accordance with the installation instructions detailed in this manual. Installation must be carried out by a New Zealand registered plumber. Installation is limited to vertical exterior walls meeting the requirements of the New Zealand Building Code. Cladding systems into which the Hydrant is to be installed must be drained and ventilated cavity systems which meets the requirements of Clause E2 of the building code as an acceptable solution through E2/AS1 or through E2/VM1 as an alternative solution. Where the cladding system complies through E2/VM1 the test must include a penetration detail which closely matches that of E2/AS1 Fig: 68 (a).

## Compliance

---

The Aquor House Hydrant will comply or contribute to comply with the following clauses of the New Zealand Building Code subject to the conditions and limitations of this Installation Guide and provided that it is installed in strict accordance with this Installation Guide.

B2 - Durability B2.3.2 (15 years)  
G10 - Piped Services G10.3.1  
G12 - Water Supplies G12.3.2, G12.3.7  
Watermark approved

## In the box

---

The following items are supplied:

- Aquor House Hydrant stainless steel body
- Weather-proof grey thermoplastic cover
- Straight hose connector with vacuum-breaker.
- 90 deg Elbow inlet
- Stainless steel screws
- Stainless steel mounting bracket
- Temporary test plug
- Two-part mounting sleeve

Items not supplied in box:

- EPDM or similar pipe penetration flashing suitable for a 45mm diameter pipe

Distributed in New Zealand by:

**HYDROFLOW**  
[www.hydroflow.co.nz](http://www.hydroflow.co.nz)

## Installation

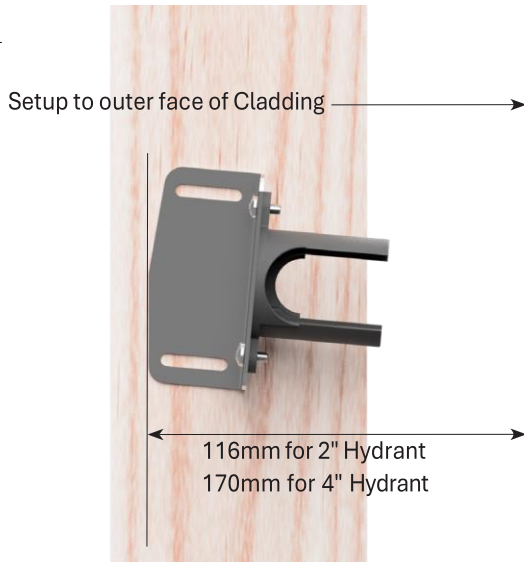
Installation must be carried out by a registered plumber in all situations.

**Note: A high degree of accuracy is required in the initial setup of the hydrant body to achieve an acceptable installation.**

Before the cladding and interior lining is installed, determine the desired position of the hydrant and screw the mounting bracket to the face of a stud or vertical nog. It is installed on a 5 deg angle to vertical so that the hydrant will have a 5 deg fall to the outside. Installation can be carried out before or after the wall underlay or rigid air barrier.

Fit the supplied elbow fitting by pushing it into the sleeve then fit the test plug screwing into the elbow, then fit the outer sleeve by sliding onto the inner sleeve.

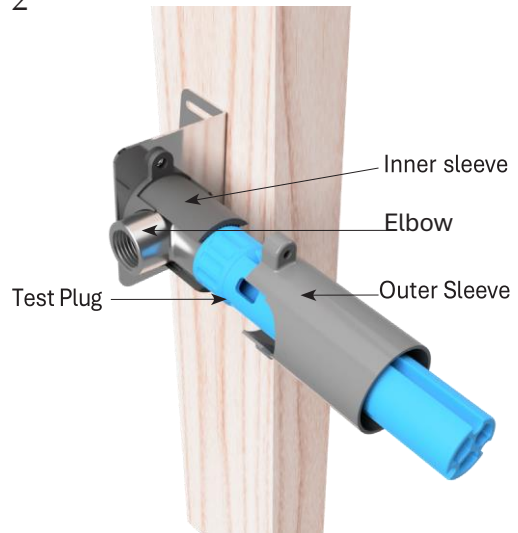
1



The hydrant should be set up so that the back of the cap assembly will be hard against the cladding when installed. Care should be taken to position the outer flange in a position that suits the profile of the cladding. For example, where vertical weatherboards are being used, the outer flange should be positioned in the center portion of the board, so it doesn't interfere with any profile.

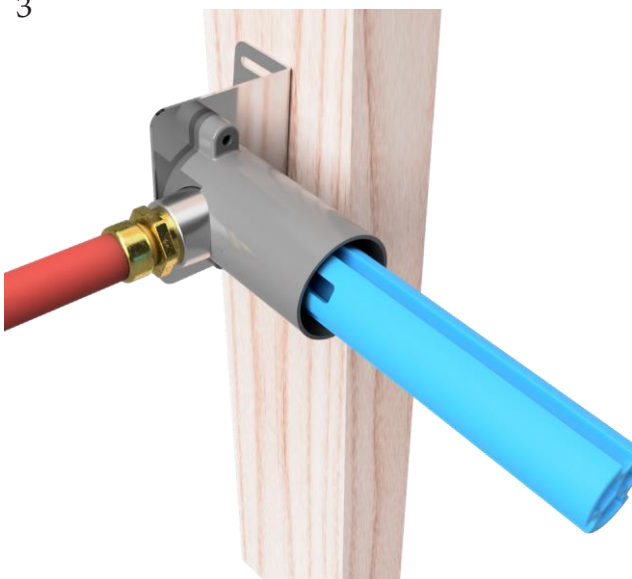
The water supply pipework can now be fitted, and the hydrant can now be pressure tested at any time before interior lining is installed to a maximum of 40 psi.

2

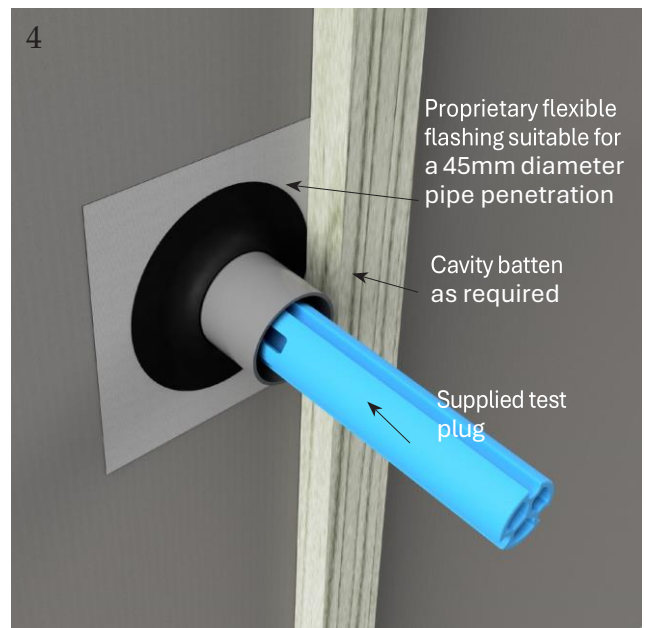


Once wall underlay has been installed a flexible penetration flashing is installed as per the requirements of Clause E2/ASI of the NZBC and the specific installation instructions of the manufacturer.

3



4



Distributed in New Zealand by:

**HYDROFLOW**  
[www.hydroflow.co.nz](http://www.hydroflow.co.nz)

The cladding can now be installed with a 45mm hole through the full depth of the cladding.  
 After the cladding has been installed the hydrant can be fitted either immediately or later by leaving the plug-in place.  
 It is desirable to fit the hydrant before the interior lining is installed so that any depth adjustments can be made.

The hydrant assembly is screwed into place with the cap wedge. The plug is designed to assist in screwing the hydrant in by reversing ends. Once in place the face flange can be screwed to the cladding.  
 The hydrant must be installed with the upper screw centered uppermost.



The cap and face plate are screwed in place

**Note :**  
 The Hydrant can be supplied in two lengths, 2 inch or 4 inch to suit different wall thicknesses.  
 The mounting bracket can also be reversed where appropriate.

